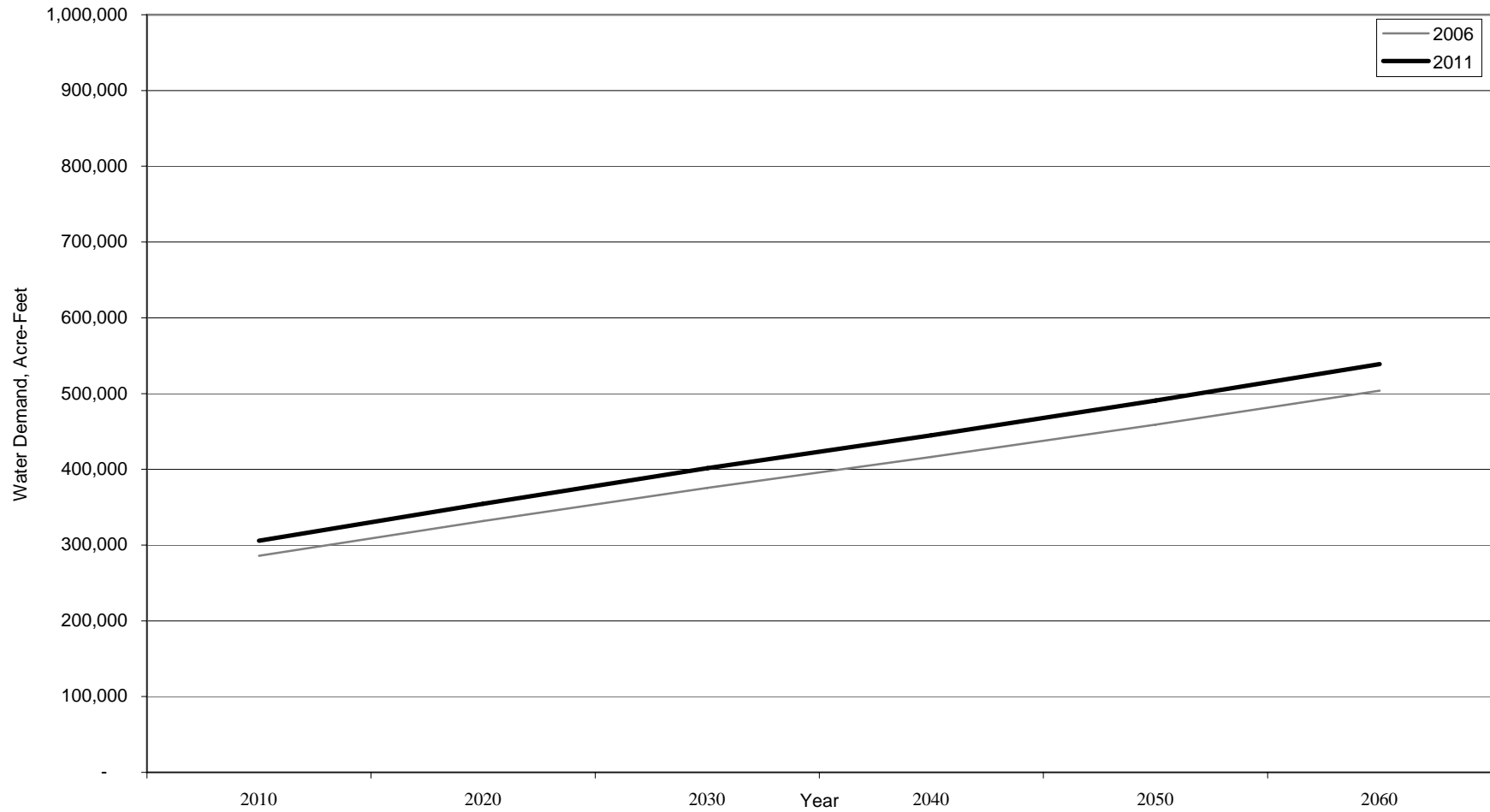


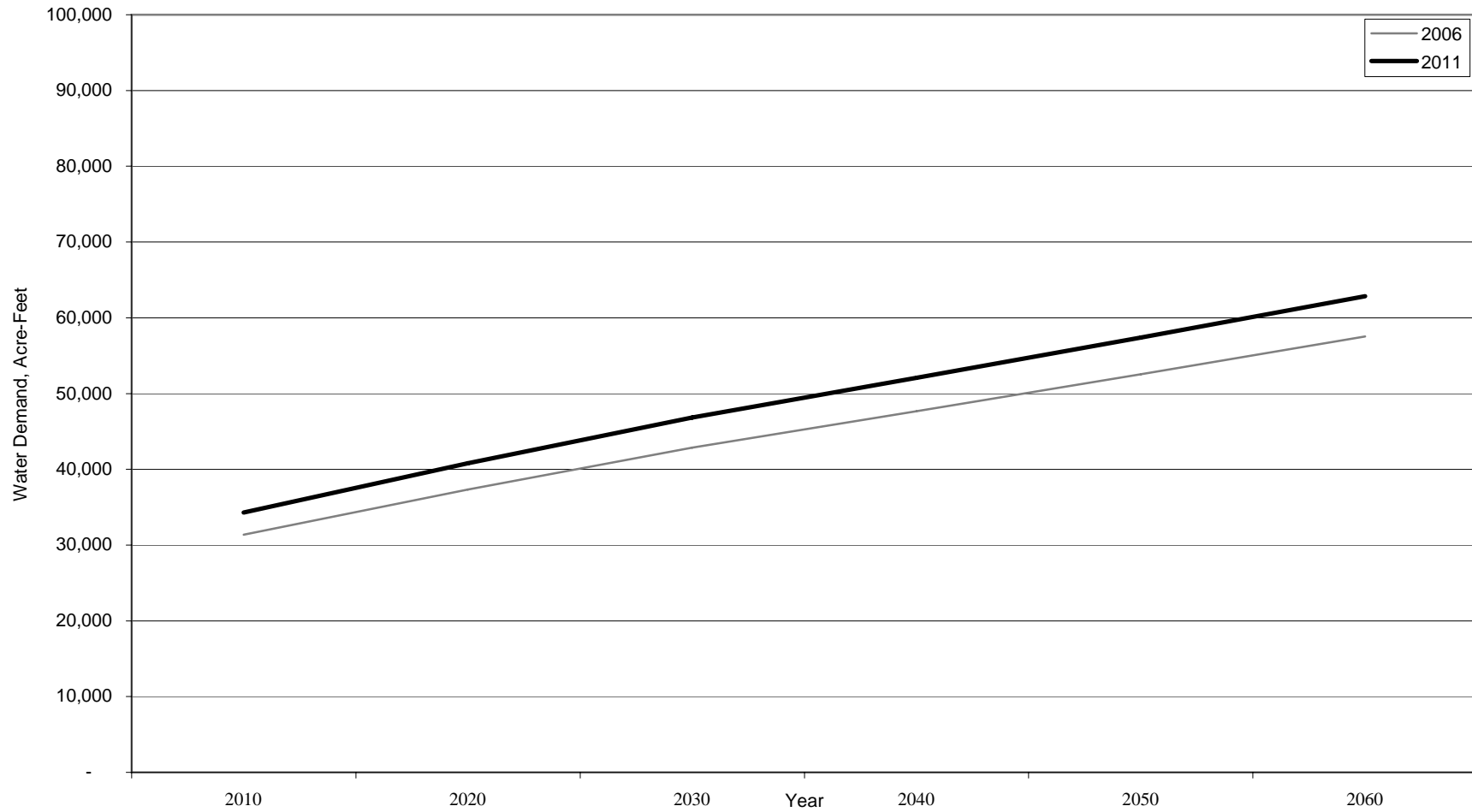
NAME	COUNTY	BASIN	2006 RWP Population Projections						Proposed Populations for 2011 RWP						2006 RWP Water Demands						Proposed Demands for 2011 RWP					
			P2010	P2020	P2030	P2040	P2050	P2060	2010	2020	2030	2040	2050	2060	P2010	P2020	P2030	P2040	P2050	P2060	2010	2020	2030	2040	2050	2060
COUNTY-OTHER	FORT BEND	BRAZOS	45,838	77,762	116,908	157,164	210,218	270,499	16,676	6,703	29,729	60,333	121,120	192,589	7,498	12,784	19,094	25,150	33,407	43,056	2,728	1,102	4,855	9,655	19,248	30,655
COUNTY-OTHER	WALKER	SAN JACINTO	10,395	11,461	11,973	11,848	11,876	11,876	8,148	4,780	5,292	4,769	4,885	4,885	5,752	6,303	6,558	6,463	6,465	6,465	4,509	2,629	2,899	2,601	2,659	2,659
COUNTY-OTHER	WALKER	TRINITY	6,712	7,400	7,732	7,651	7,667	7,667	5,924	5,912	6,244	5,293	4,906	4,361	3,714	4,070	4,235	4,174	4,174	4,174	3,278	3,252	3,420	2,886	2,671	2,374
HUNTSVILLE	WALKER	SAN JACINTO	32,831	36,196	37,816	37,419	37,507	37,507	35,078	42,877	44,497	44,498	44,498	44,498	4,597	4,946	5,041	4,904	4,874	4,874	6,287	7,529	7,659	7,512	7,469	7,472
HUNTSVILLE	WALKER	TRINITY	7,310	8,059	8,420	8,331	8,351	8,351	7,810	9,547	9,908	9,907	9,907	9,907	1,024	1,101	1,122	1,092	1,085	1,085	1,400	1,676	1,706	1,673	1,663	1,664
NFBWA	FORT BEND	BRAZOS	0	0	0	0	0	0	5,502	8,989	13,469	18,692	26,825	37,054	0	0	0	0	0	0	1,294	2,063	3,050	4,194	5,962	6,010
NFBWA	FORT BEND	SAN JACINTO	0	0	0	0	0	0	80,729	110,414	134,155	151,076	156,743	156,898	0	0	0	0	0	0	18,990	25,342	30,377	33,900	34,838	34,633
NFBWA	FORT BEND	SAN JACINTO-BRAZOS	0	0	0	0	0	0	54,154	119,372	170,729	217,834	261,309	302,393	0	0	0	0	0	0	12,739	27,398	38,659	48,881	58,079	66,749
NFBWA	HARRIS	SAN JACINTO	0	0	0	0	0	0	6,954	6,824	6,875	7,244	7,469	7,429	0	0	0	0	0	0	1,636	1,597	1,537	1,458	1,361	1,254
RICHMOND	FORT BEND	BRAZOS	12,173	13,305	14,689	16,112	17,978	20,110	13,493	14,212	17,257	20,334	25,149	30,295	2,032	2,176	2,353	2,527	2,799	3,131	2,252	2,324	2,764	3,189	3,915	4,717
STEAM ELECTRIC POWER	FORT BEND	BRAZOS	-	-	-	-	-	-	-	-	-	-	-	-	66,026	68,046	79,553	93,582	110,682	131,527	66,026	68,046	79,553	93,582	110,682	131,527

COUNTY SUMMARY																									
COUNTY		2006 RWP Population Projections						Proposed Populations for 2011 RWP						2006 RWP Net Demands						Proposed Demands for 2011 RWP					
		P2010	P2020	P2030	P2040	P2050	P2060	2010	2020	2030	2040	2050	2060	D2010	D2020	D2030	2040	2050	2060	2010	2020	2030	2040	2050	2060
AUSTIN		27,173	30,574	32,946	34,355	35,031	35,958	27,173	30,574	32,946	34,355	35,031	35,958	16,411	16,779	17,038	17,156	17,224	17,368	16,616	17,179	17,571	17,757	17,863	18,058
BRAZORIA		285,850	331,731	375,664	416,157	459,078	503,894	305,649	354,708	401,684	444,981	490,875	538,795	445,675	466,607	491,490	517,741	544,898	577,029	448,174	469,308	494,392	520,853	548,263	580,660
CHAMBERS		31,375	37,328	42,867	47,667	52,535	57,521	34,282	40,786	46,838	52,083	57,402	62,850	176,523	180,704	184,967	189,223	193,558	198,186	176,883	181,120	185,435	189,737	194,119	198,800
FORT BEND		490,072	630,624	802,486	979,196	1,210,945	1,475,761	550,121	719,737	893,875	1,090,710	1,348,851	1,643,825	220,104	244,621	283,522	324,935	378,776	442,163	240,393	275,961	319,303	367,720	427,836	495,278
HARRIS		3,951,682	4,502,786	5,053,890	5,604,994	6,156,098	6,707,202	4,078,231	4,629,335	5,180,439	5,731,543	6,282,647	6,833,751	1,099,124	1,223,355	1,329,942	1,437,232	1,543,413	1,632,700	1,129,104	1,254,421	1,361,958	1,468,679	1,573,463	1,661,465
LEON		18,231	21,137	22,863	22,971	22,809	23,028	18,231	21,137	22,863	22,971	22,809	23,028	6,586	6,903	7,110	7,176	7,224	7,332	6,592	6,915	7,124	7,191	7,238	7,347
LIBERTY		81,930	94,898	107,335	119,519	132,875	147,845	81,930	94,898	107,335	119,519	132,875	147,845	106,026	108,486	110,319	112,333	114,692	117,565	106,213	108,875	110,898	113,089	115,651	118,751
MADISON		13,905	14,873	15,644	16,364	17,002	17,560	13,905	14,873	15,644	16,364	17,002	17,560	2,845	2,946	3,027	3,088	3,167	3,263	2,846	2,949	3,030	3,090	3,170	3,266
MONTGOMERY		417,692	542,051	692,548	858,410	1,077,190	1,331,286	453,369	588,351	751,702	931,732	1,169,199	1,444,999	76,785	102,300	125,132	149,737	182,613	221,286	83,018	110,901	135,888	162,727	198,439	240,475
POLK		37,650	42,196	45,779	48,561	51,535	54,380	37,650	42,196	45,779	48,561	51,535	54,380	5,022	5,395	5,652	5,829	6,081	6,374	5,225	5,797	6,212	6,502	6,861	7,257
SAN JACINTO		27,443	32,541	36,617	39,159	40,630	41,299	27,443	32,541	36,617	39,159	40,630	41,299	4,190	4,654	5,007	5,196	5,302	5,374	5,024	5,623	6,051	6,125	6,158	6,121
TRINITY		11,571	12,485	12,786	12,631	12,131	11,673	11,571	12,485	12,786	12,631	12,131	11,673	1,887	1,944	1,939	1,890	1,829	1,786	1,887	1,944	1,939	1,890	1,829	1,786
WALKER		70,672	77,915	81,402	80,547	80,737	80,737	70,672	77,915	81,402	80,547	80,737	80,737	20,376	22,315	23,360	23,468	23,836	24,270	20,784	20,981	22,088	21,562	21,781	21,959
WALLER		41,137	51,175	62,352	74,789	89,598	106,608	41,137	51,175	62,352	74,789	89,598	106,608	29,105	30,034	31,115	32,276	33,772	35,524	29,799	31,101	32,578	34,204	36,223	38,595

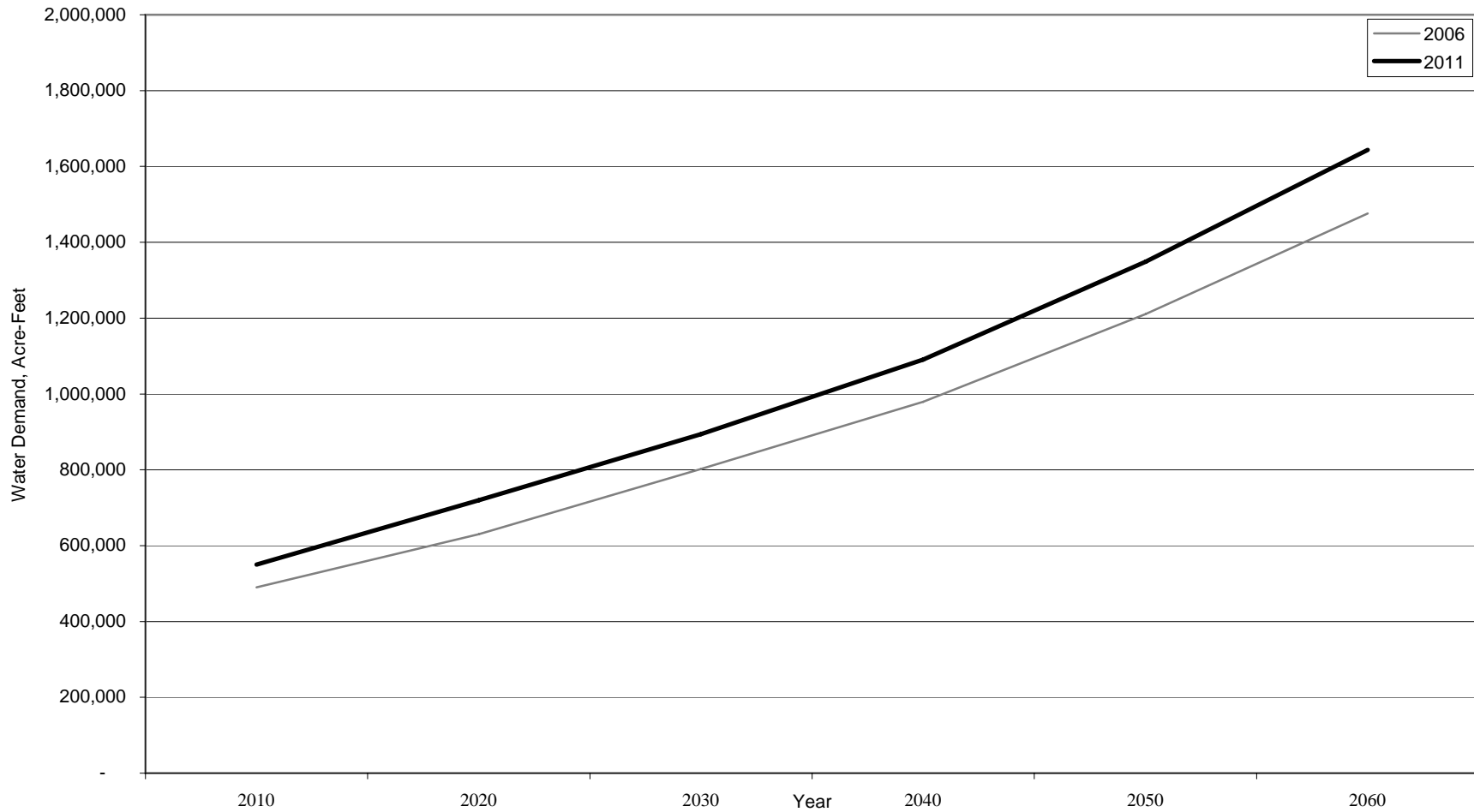
**Brazoria County Total Population Projections
2006 RWP vs 2011 RWP**



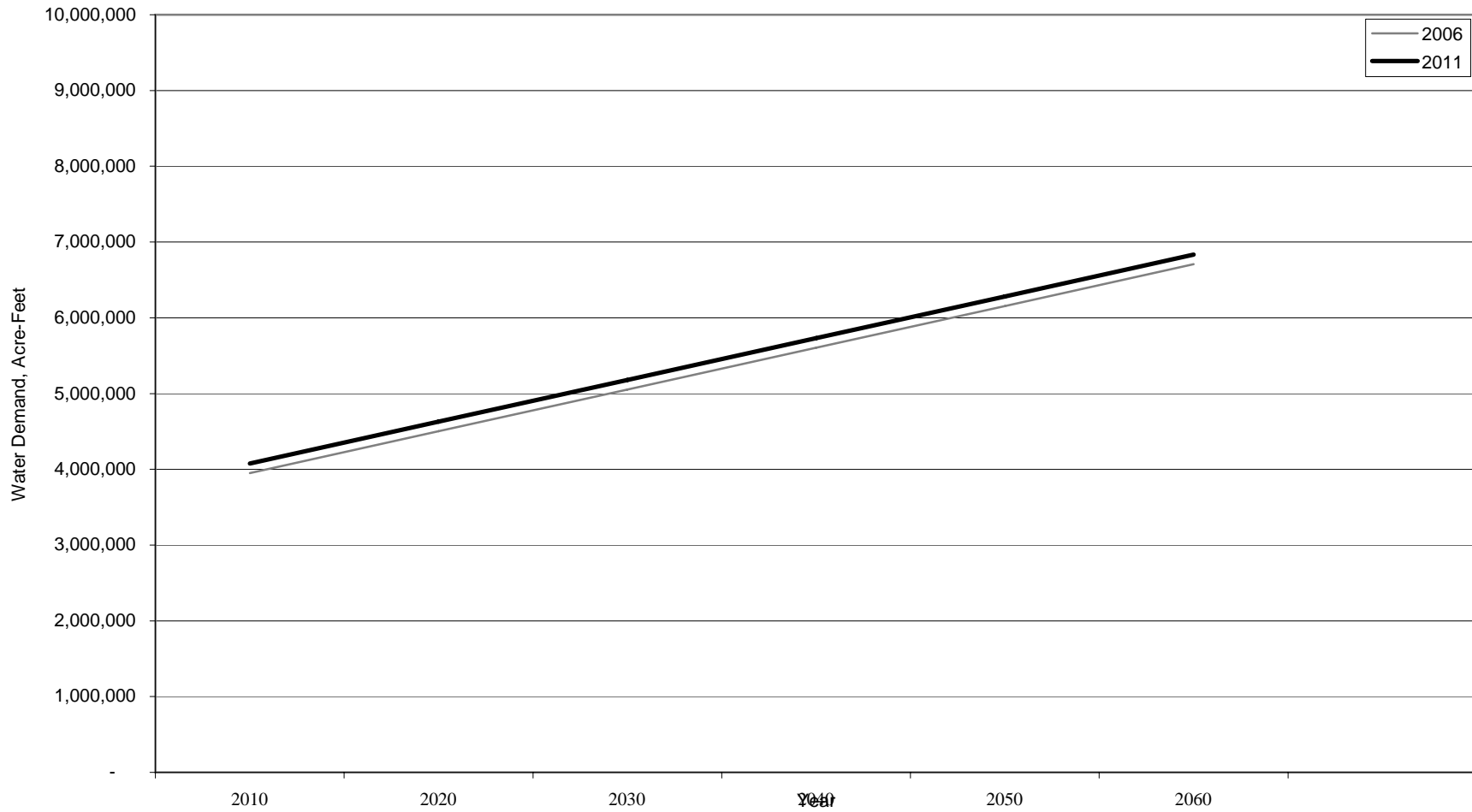
**Chambers County Total Population Projections
2006 RWP vs 2011 RWP**



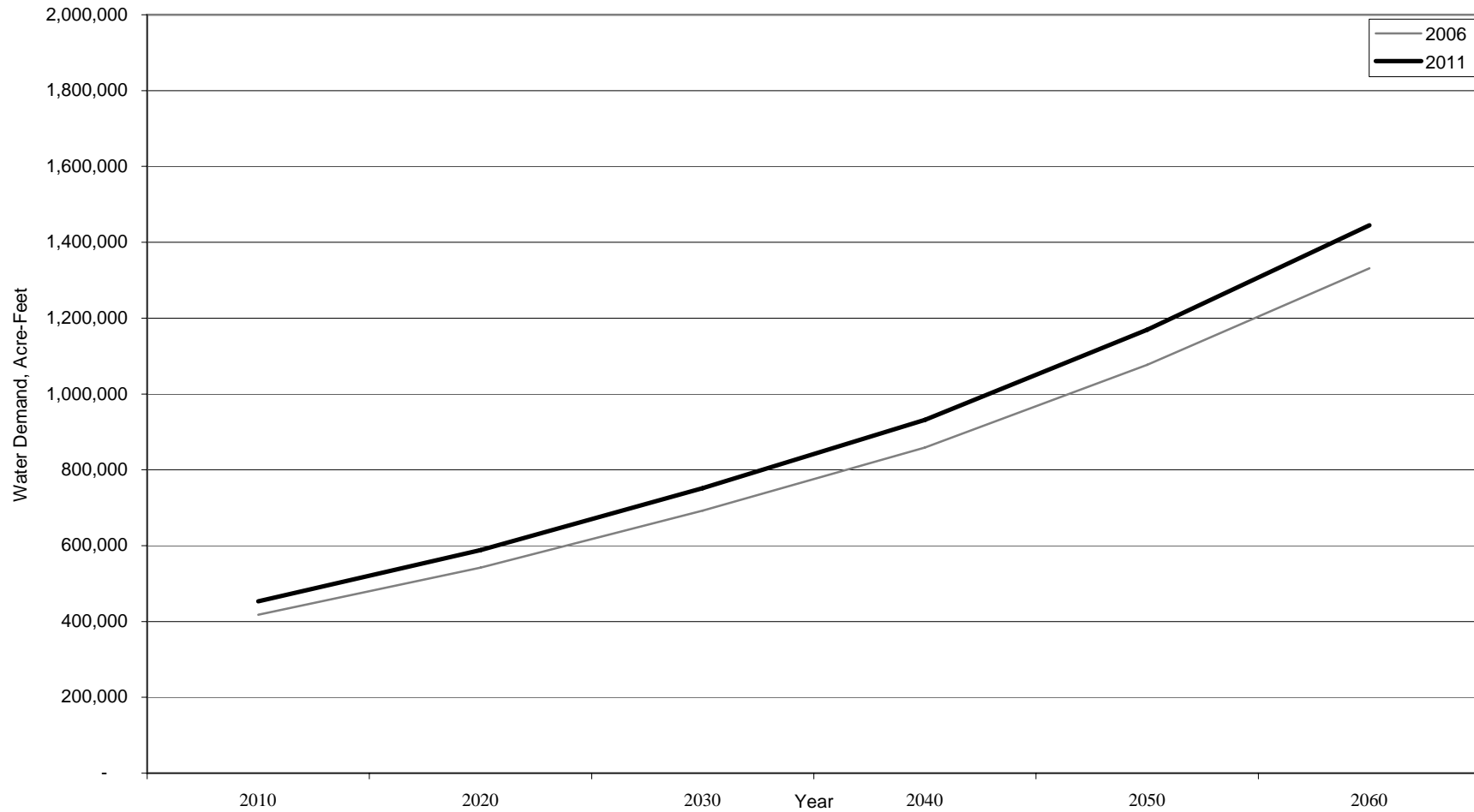
**Fort Bend County Total Population Projections
2006 RWP vs 2011 RWP**



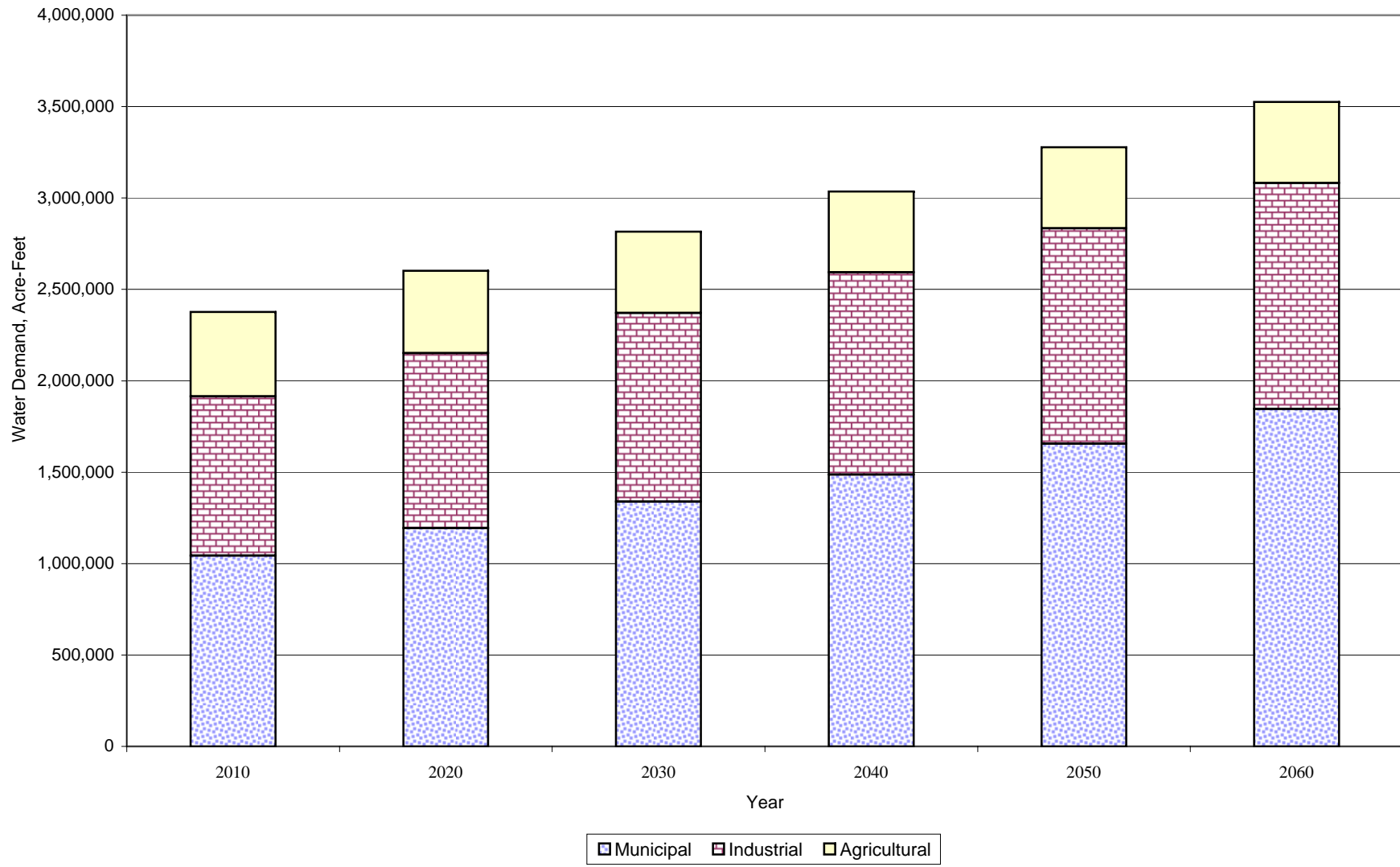
**Harris County Total Population Projections
2006 RWP vs 2011 RWP**



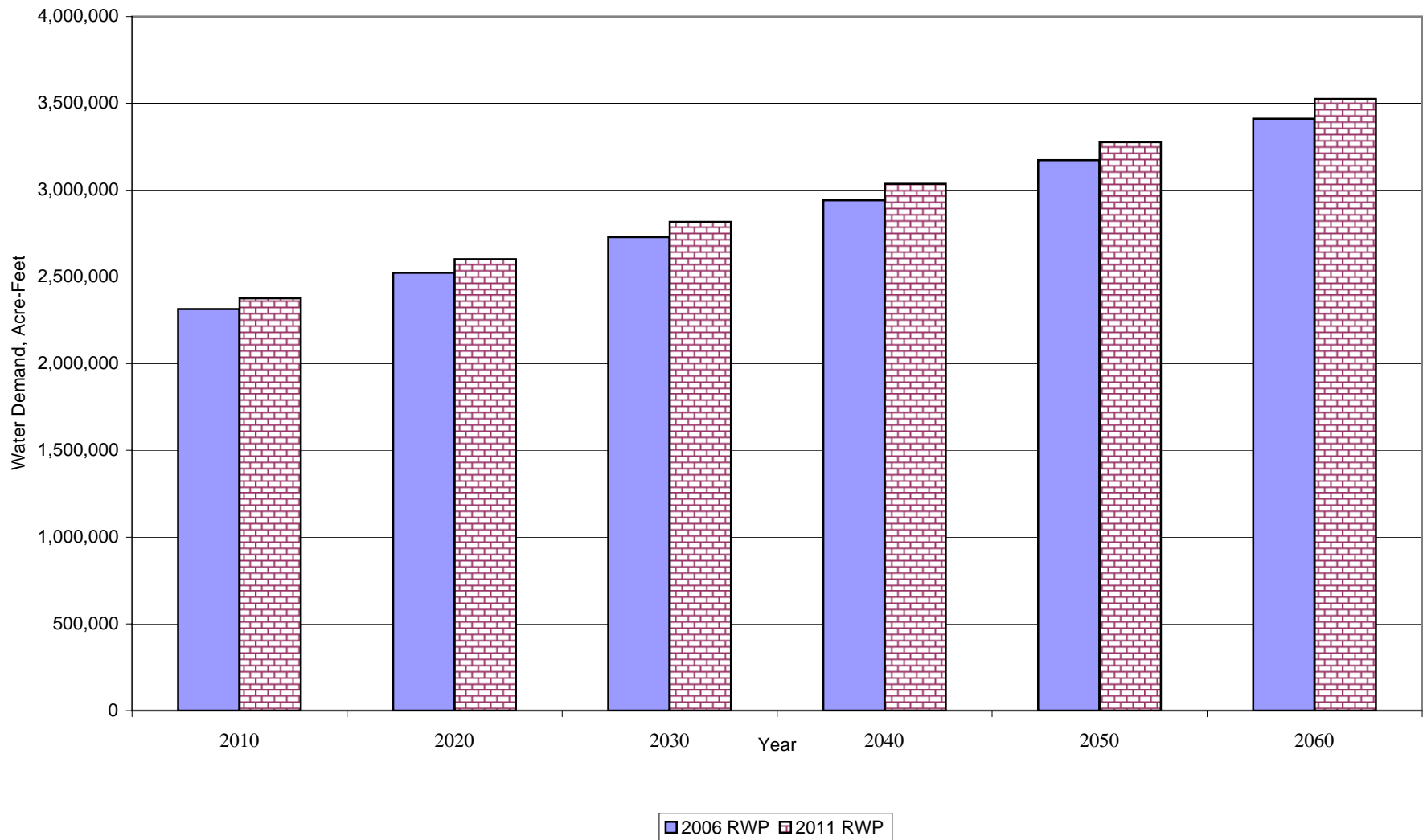
**Montgomery County Total Population Projections
2006 RWP vs 2011 RWP**



**Total Water Demands by Category
2011 RWP**



Comparison of Water Demand Estimates 2006 RWP vs 2011 RWP



WUG	COUNTY	BASIN	2011 POPULATIONS					
			2010	2020	2030	2040	2050	2060
1	BELLVILLE	AUSTIN BRAZOS	5,213	6,560	7,499	8,057	8,325	8,692
2	COUNTY-OTHER	AUSTIN BRAZOS	8,982	7,775	6,933	6,432	6,191	5,862
3	COUNTY-OTHER	AUSTIN BRAZOS-COLORADO	2,409	2,739	2,969	3,106	3,172	3,262
4	COUNTY-OTHER	AUSTIN COLORADO	226	257	279	292	298	306
5	SAN FELIPE	AUSTIN BRAZOS	1,106	1,332	1,490	1,584	1,629	1,691
6	SEALY	AUSTIN BRAZOS	7,902	10,421	12,178	13,222	13,723	14,410
7	WALLIS	AUSTIN BRAZOS-COLORADO	1,335	1,490	1,598	1,662	1,693	1,735
AUSTIN TOTAL			27,173	30,574	32,946	34,356	35,031	35,958
1	ALVIN	BRAZORIA SAN JACINTO-BRAZOS	23,231	25,123	26,935	28,605	30,375	32,223
2	ANGLETON	BRAZORIA SAN JACINTO-BRAZOS	19,999	20,900	21,763	22,559	23,402	24,282
3	BAILEY'S PRAIRIE	BRAZORIA BRAZOS	121	129	137	144	152	160
4	BAILEY'S PRAIRIE	BRAZORIA SAN JACINTO-BRAZOS	623	666	707	745	786	828
5	BRAZORIA	BRAZORIA BRAZOS	745	761	776	790	805	820
6	BRAZORIA	BRAZORIA BRAZOS-COLORADO	2,316	2,366	2,413	2,456	2,502	2,550
7	BRAZORIA COUNTY MUD #1	BRAZORIA SAN JACINTO-BRAZOS	7,517	11,063	14,458	17,587	20,904	24,368
8	BRAZORIA COUNTY MUD #2	BRAZORIA BRAZOS	4,857	6,959	8,971	10,826	12,792	14,845
9	BRAZORIA COUNTY MUD #3	BRAZORIA SAN JACINTO-BRAZOS	4,987	7,340	9,593	11,669	13,870	16,168
10	BRAZORIA COUNTY MUD #4	BRAZORIA SAN JACINTO-BRAZOS	3,438	3,438	3,438	3,438	3,438	3,438
11	BRAZORIA COUNTY MUD #5	BRAZORIA SAN JACINTO-BRAZOS	4,743	4,743	4,743	4,743	4,743	4,743
12	BROOKSIDE VILLAGE	BRAZORIA SAN JACINTO-BRAZOS	2,282	2,618	2,939	3,235	3,549	3,877
13	CLUTE	BRAZORIA SAN JACINTO-BRAZOS	11,217	12,043	12,834	13,563	14,335	15,141
14	COUNTY-OTHER	BRAZORIA BRAZOS	509	538	570	602	637	675
15	COUNTY-OTHER	BRAZORIA BRAZOS-COLORADO	17,190	18,480	19,719	20,862	22,076	23,342
16	COUNTY-OTHER	BRAZORIA SAN JACINTO-BRAZOS	40,875	45,409	50,791	55,708	60,953	66,487
17	DANBURY	BRAZORIA SAN JACINTO-BRAZOS	1,747	1,888	2,023	2,148	2,280	2,418
18	FREEPORT	BRAZORIA BRAZOS	1,173	1,173	1,173	1,173	1,173	1,173
19	FREEPORT	BRAZORIA SAN JACINTO-BRAZOS	14,621	17,833	20,909	23,744	26,749	29,886
20	HILLCREST	BRAZORIA SAN JACINTO-BRAZOS	744	767	789	810	832	855
21	HOLIDAY LAKES	BRAZORIA SAN JACINTO-BRAZOS	1,141	1,189	1,235	1,278	1,323	1,370
22	IOWA COLONY	BRAZORIA SAN JACINTO-BRAZOS	911	1,022	1,129	1,227	1,331	1,440
23	JONES CREEK	BRAZORIA BRAZOS-COLORADO	2,130	2,130	2,130	2,130	2,130	2,130
24	LAKE JACKSON	BRAZORIA SAN JACINTO-BRAZOS	29,383	32,502	35,488	38,241	41,159	44,205
25	MANVEL	BRAZORIA SAN JACINTO-BRAZOS	4,510	4,510	4,510	4,510	4,510	4,510
26	ORBIT SYSTEMS INC	BRAZORIA BRAZOS-COLORADO	516	627	733	831	935	1,043
27	ORBIT SYSTEMS INC	BRAZORIA SAN JACINTO-BRAZOS	4,201	5,101	5,963	6,758	7,600	8,480
28	OYSTER CREEK	BRAZORIA SAN JACINTO-BRAZOS	1,424	1,666	1,897	2,110	2,336	2,572
29	PEARLAND	BRAZORIA SAN JACINTO-BRAZOS	82,803	104,912	125,037	143,622	163,286	183,764
30	RICHWOOD	BRAZORIA SAN JACINTO-BRAZOS	3,534	3,798	4,050	4,282	4,528	4,785
31	SOUTHWEST UTILITIES	BRAZORIA SAN JACINTO-BRAZOS	632	668	703	735	769	804
32	SURFSIDE BEACH	BRAZORIA BRAZOS	889	1,020	1,146	1,262	1,385	1,513
33	SWEENEY	BRAZORIA BRAZOS-COLORADO	3,895	4,177	4,447	4,696	4,960	5,236
34	VARNER CREEK UD	BRAZORIA BRAZOS	2,341	2,852	3,341	3,792	4,270	4,769
35	WEST COLUMBIA	BRAZORIA BRAZOS	3,696	3,606	3,520	3,441	3,357	3,269
36	WEST COLUMBIA	BRAZORIA BRAZOS-COLORADO	708	691	674	659	643	626
BRAZORIA TOTAL			305,649	354,708	401,684	444,981	490,875	538,795
1	ANAHUAC	CHAMBERS NECHES-TRINITY	1,866	2,035	2,192	2,328	2,466	2,607
2	ANAHUAC	CHAMBERS TRINITY	539	588	633	672	712	753
3	BAYTOWN	CHAMBERS TRINITY-SAN JACINTO	3,754	4,211	4,636	5,004	5,377	5,760
4	BEACH CITY	CHAMBERS TRINITY	292	391	483	562	643	726
5	BEACH CITY	CHAMBERS TRINITY-SAN JACINTO	2,066	2,762	3,409	3,970	4,539	5,122
6	COUNTY-OTHER	CHAMBERS NECHES-TRINITY	410	403	397	394	388	381
7	COUNTY-OTHER	CHAMBERS TRINITY	2,054	2,022	1,992	1,966	1,940	1,913
8	COUNTY-OTHER	CHAMBERS TRINITY-SAN JACINTO	1,324	1,303	1,284	1,267	1,250	1,233
9	MONT BELVIEU	CHAMBERS TRINITY	2,195	2,878	3,513	4,063	4,621	5,193
10	MONT BELVIEU	CHAMBERS TRINITY-SAN JACINTO	1,029	1,349	1,647	1,905	2,167	2,435
11	OLD RIVER-WINFREE	CHAMBERS TRINITY	1,585	1,755	1,913	2,050	2,189	2,331
12	TRINITY BAY CONSERVATION DISTRICT	CHAMBERS NECHES-TRINITY	11,780	14,470	16,975	19,146	21,347	23,602
13	TRINITY BAY CONSERVATION DISTRICT	CHAMBERS TRINITY	5,388	6,619	7,764	8,756	9,763	10,794
CHAMBERS TOTAL			34,282	40,786	46,838	52,083	57,402	62,850
1	ARCOLA	FORT BEND SAN JACINTO-BRAZOS	2,500	2,750	3,025	3,328	3,661	4,026
2	BEASLEY	FORT BEND BRAZOS	62	72	84	97	114	133
3	BEASLEY	FORT BEND BRAZOS-COLORADO	639	743	871	1,002	1,174	1,371
4	COUNTY-OTHER	FORT BEND BRAZOS	16,676	6,703	29,729	60,333	121,120	192,589
5	COUNTY-OTHER	FORT BEND BRAZOS-COLORADO	1,346	404	1,080	1,464	1,967	2,099
6	COUNTY-OTHER	FORT BEND SAN JACINTO	692	562	713	3,861	12,041	21,265
7	COUNTY-OTHER	FORT BEND SAN JACINTO-BRAZOS	3,068	2,812	2,272	25,680	77,834	135,354
8	FAIRCHILDS	FORT BEND BRAZOS	929	1,189	1,507	1,834	2,263	2,754
9	FIRST COLONY MUD #9	FORT BEND BRAZOS	8,120	8,424	8,728	9,032	9,336	9,640
10	FORT BEND COUNTY MUD #106	FORT BEND BRAZOS	3,285	3,285	3,285	3,285	3,285	3,285
11	FORT BEND COUNTY MUD #108	FORT BEND BRAZOS	2,817	2,817	2,817	2,817	2,817	2,817
12	FORT BEND COUNTY MUD #111	FORT BEND BRAZOS	3,315	3,315	3,315	3,315	3,315	3,315
13	FORT BEND COUNTY MUD #23	FORT BEND SAN JACINTO-BRAZOS	12,600	18,000	18,000	18,000	18,000	18,000
14	FORT BEND COUNTY MUD #25	FORT BEND SAN JACINTO-BRAZOS	11,336	16,141	22,016	28,057	35,979	45,032
15	FORT BEND COUNTY MUD #67	FORT BEND BRAZOS	3,759	3,759	3,759	3,759	3,759	3,759
16	FORT BEND COUNTY MUD #68	FORT BEND BRAZOS	3,717	3,717	3,717	3,717	3,717	3,717
17	FORT BEND COUNTY MUD #69	FORT BEND BRAZOS	2,086	2,086	2,086	2,086	2,086	2,086
18	FORT BEND COUNTY MUD #81	FORT BEND BRAZOS	2,054	2,762	3,628	4,518	5,685	7,019
19	FULSHEAR	FORT BEND BRAZOS	664	848	1,072	1,303	1,606	1,951
20	FULSHEAR	FORT BEND SAN JACINTO-BRAZOS	434	553	700	851	1,048	1,275
21	HOUSTON	FORT BEND SAN JACINTO	23,433	27,408	32,268	37,266	43,820	51,309
22	HOUSTON	FORT BEND SAN JACINTO-BRAZOS	16,457	19,249	22,663	26,173	30,776	36,036
23	KATY	FORT BEND SAN JACINTO	1,548	2,072	2,712	3,370	4,233	5,220
24	KENDLETON	FORT BEND BRAZOS-COLORADO	601	775	1,000	1,290	1,664	2,147
25	MEADOWS	FORT BEND SAN JACINTO	6,333	6,333	6,333	6,333	6,332	6,332
26	MEADOWS	FORT BEND SAN JACINTO-BRAZOS	628	628	628	628	629	629
27	MISSOURI CITY	FORT BEND BRAZOS	1,659	2,088	2,499	2,917	3,206	3,880
28	MISSOURI CITY	FORT BEND SAN JACINTO	13,589	17,102	20,468	23,885	26,256	31,779
29	MISSOURI CITY	FORT BEND SAN JACINTO-BRAZOS	61,510	77,411	92,650	108,116	118,851	143,849
30	NEEDVILLE	FORT BEND BRAZOS	1,754	2,209	2,766	3,338	4,088	4,946
31	NEEDVILLE	FORT BEND BRAZOS-COLORADO	2,121	2,672	3,345	4,037	4,945	5,982
32	NFBWA	FORT BEND BRAZOS	5,502	8,989	13,469	18,692	26,825	37,054
33	NFBWA	FORT BEND SAN JACINTO	80,729	110,414	134,155	151,076	156,743	156,898
34	NFBWA	FORT BEND SAN JACINTO-BRAZOS	54,154	119,372	170,729	217,834	261,309	302,393
35	ORBIT SYSTEMS INC	FORT BEND SAN JACINTO-BRAZOS	163	183	207	232	264	301
36	PECAN GROVE MUD #1	FORT BEND BRAZOS	10,220	10,464	10,762	11,068	11,470	11,929
37	PECAN GROVE MUD #1	FORT BEND SAN JACINTO-BRAZOS	2,716	2,781	2,860	2,941	3,048	3,170

WUG	COUNTY	BASIN	2011 POPULATIONS						
			2010	2020	2030	2040	2050	2060	
38	PLANTATION MUD	FORT BEND	SAN JACINTO-BRAZOS	4,333	4,333	4,333	4,333	4,333	4,333
39	PLEAK	FORT BEND	BRAZOS	1,250	1,490	1,784	2,086	2,482	2,935
40	RICHMOND	FORT BEND	BRAZOS	13,493	14,212	17,257	20,334	25,149	30,295
41	ROSENBERG	FORT BEND	BRAZOS	37,420	48,048	61,043	74,405	91,929	111,953
42	SIENNA PLANTATION MUD #2	FORT BEND	SAN JACINTO-BRAZOS	5,667	6,557	6,557	6,557	6,557	6,557
43	SIMONTON	FORT BEND	BRAZOS	953	1,140	1,369	1,604	1,912	2,264
44	STAFFORD	FORT BEND	SAN JACINTO	4,433	5,960	7,827	9,747	12,265	15,142
45	STAFFORD	FORT BEND	SAN JACINTO-BRAZOS	18,593	24,999	32,832	40,886	51,449	63,519
46	SUGAR LAND	FORT BEND	BRAZOS	33,986	41,123	42,574	42,574	42,574	42,574
47	SUGAR LAND	FORT BEND	SAN JACINTO	3,403	4,118	4,263	4,263	4,263	4,263
48	SUGAR LAND	FORT BEND	SAN JACINTO-BRAZOS	46,430	56,181	58,163	58,163	58,163	58,163
49	WHCRWA	FORT BEND	SAN JACINTO	16,944	20,484	23,955	28,223	32,509	36,486
			FORT BEND TOTAL	550,121	719,737	893,875	1,090,710	1,348,851	1,643,825
1	BACLIFF MUD	GALVESTON	SAN JACINTO-BRAZOS	7,816	8,509	8,919	9,085	9,209	9,289
2	BAYOU VISTA	GALVESTON	SAN JACINTO-BRAZOS	1,816	1,964	2,052	2,088	2,114	2,131
3	BOLIVAR PENINSULAR SUD	GALVESTON	NECHES-TRINITY	4,266	4,622	4,833	4,918	4,982	5,023
4	CLEAR LAKE SHORES	GALVESTON	SAN JACINTO-BRAZOS	1,263	1,313	1,343	1,355	1,364	1,370
5	COUNTY-OTHER	GALVESTON	NECHES-TRINITY	1	3	4	4	4	5
6	COUNTY-OTHER	GALVESTON	SAN JACINTO-BRAZOS	8,522	7,426	6,777	6,514	6,318	6,191
7	DICKINSON	GALVESTON	SAN JACINTO-BRAZOS	19,955	22,425	23,888	24,480	24,921	25,208
8	FRIENDSWOOD	GALVESTON	SAN JACINTO-BRAZOS	24,553	27,415	29,110	29,796	30,307	30,639
9	GALVESTON	GALVESTON	SAN JACINTO-BRAZOS	57,247	57,247	57,247	57,247	57,247	57,247
10	GALVESTON COUNTY MUD #1	GALVESTON	SAN JACINTO-BRAZOS	3,493	4,071	4,413	4,552	4,655	4,722
11	GALVESTON COUNTY WCID #12	GALVESTON	SAN JACINTO-BRAZOS	1,641	1,861	1,992	2,045	2,084	2,110
12	HITCHCOCK	GALVESTON	SAN JACINTO-BRAZOS	6,660	6,897	7,037	7,094	7,136	7,163
13	JAMAICA BEACH	GALVESTON	SAN JACINTO-BRAZOS	1,314	1,520	1,642	1,691	1,728	1,752
14	KEMAH	GALVESTON	SAN JACINTO-BRAZOS	2,985	3,550	3,885	4,021	4,122	4,188
15	LA MARQUE	GALVESTON	SAN JACINTO-BRAZOS	13,682	13,682	13,682	13,682	13,682	13,682
16	LEAGUE CITY	GALVESTON	SAN JACINTO-BRAZOS	53,403	60,392	64,532	66,207	67,454	68,265
17	SAN LEON MUD	GALVESTON	SAN JACINTO-BRAZOS	6,795	7,481	7,887	8,051	8,173	8,253
18	SANTA FE	GALVESTON	SAN JACINTO-BRAZOS	10,141	10,653	10,956	11,079	11,170	11,229
19	TEXAS CITY	GALVESTON	SAN JACINTO-BRAZOS	41,891	42,211	42,400	42,477	42,534	42,571
20	TIKI ISLAND	GALVESTON	SAN JACINTO-BRAZOS	1,270	1,489	1,619	1,672	1,711	1,736
			GALVESTON TOTAL	268,714	284,731	294,218	298,057	300,915	302,774
1	BAYTOWN	HARRIS	SAN JACINTO	3,867	3,980	4,091	4,201	4,310	4,420
2	BAYTOWN	HARRIS	TRINITY-SAN JACINTO	65,284	67,188	69,063	70,918	72,762	74,597
3	BELLAIRE	HARRIS	SAN JACINTO	17,272	18,859	20,420	21,965	23,500	25,029
4	BLUE BELL MANOR UTILITY COMPANY	HARRIS	SAN JACINTO	2,592	2,592	2,592	2,592	2,592	2,592
5	BRITMOORE UTILITIES	HARRIS	SAN JACINTO	2,061	2,444	2,821	3,194	3,565	3,934
6	BUNKER HILL VILLAGE	HARRIS	SAN JACINTO	3,750	3,750	3,750	3,750	3,750	3,750
7	CANDLELIGHT HILLS SUBDIVISION	HARRIS	SAN JACINTO	2,213	2,656	3,092	3,523	3,952	4,379
8	CHCRWA	HARRIS	SAN JACINTO	29,950	41,550	41,550	41,550	41,550	41,550
9	CHIMNEY HILL MUD	HARRIS	SAN JACINTO	6,412	6,412	6,412	6,412	6,412	6,412
10	CLEAR BROOK CITY MUD WOODMEADOWS	HARRIS	SAN JACINTO	10,417	11,852	13,263	14,660	16,048	17,431
11	CONSUMERS WATER INC	HARRIS	SAN JACINTO	4,243	5,778	7,288	8,782	10,267	11,746
12	COUNTY-OTHER	HARRIS	SAN JACINTO	35,182	35,532	90,079	211,175	376,801	550,288
13	COUNTY-OTHER	HARRIS	SAN JACINTO-BRAZOS	15,288	12,168	15,254	12,584	12,273	12,568
14	COUNTY-OTHER	HARRIS	TRINITY-SAN JACINTO	13,841	10,565	12,124	8,490	6,049	4,024
15	CROSBY MUD	HARRIS	SAN JACINTO	4,734	5,184	5,634	6,084	6,534	6,984
16	CRYSTAL SPRNGS WATER COMPANY	HARRIS	SAN JACINTO	234	308	381	453	525	596
17	DEER PARK	HARRIS	SAN JACINTO	11,650	12,032	12,408	12,780	13,149	13,517
18	DEER PARK	HARRIS	SAN JACINTO-BRAZOS	17,863	18,448	19,024	19,594	20,160	20,724
19	EL DORADO UD	HARRIS	SAN JACINTO	3,350	3,737	4,118	4,495	4,870	5,243
20	EL LAGO	HARRIS	SAN JACINTO-BRAZOS	3,075	3,075	3,075	3,075	3,075	3,075
21	FOUNTAINVIEW SUBDIVISION	HARRIS	SAN JACINTO	2,984	3,510	4,027	4,539	5,048	5,555
22	FRIENDSWOOD	HARRIS	SAN JACINTO-BRAZOS	7,800	7,800	7,800	7,800	7,800	7,800
23	GALENA PARK	HARRIS	SAN JACINTO	11,099	11,592	12,077	12,557	13,034	13,510
24	GREEN TRAILS MUD	HARRIS	SAN JACINTO	2,694	3,084	3,468	3,848	4,225	4,601
25	HARRIS COUNTY FWSD #47	HARRIS	SAN JACINTO	4,290	4,290	4,290	4,290	4,290	4,290
26	HARRIS COUNTY FWSD #51	HARRIS	SAN JACINTO	18,866	18,866	18,866	18,866	18,866	18,866
27	HARRIS COUNTY FWSD #6	HARRIS	SAN JACINTO	3,722	4,424	5,115	5,799	6,479	7,156
28	HARRIS COUNTY MUD #11	HARRIS	SAN JACINTO	2,905	3,354	3,796	4,233	4,668	5,101
29	HARRIS COUNTY MUD #119 INWOOD NORTH	HARRIS	SAN JACINTO	8,079	8,725	8,725	8,725	8,725	8,725
30	HARRIS COUNTY MUD #132	HARRIS	SAN JACINTO	9,436	11,844	14,212	16,556	18,885	21,206
31	HARRIS COUNTY MUD #151	HARRIS	SAN JACINTO	7,392	7,392	7,392	7,392	7,392	7,392
32	HARRIS COUNTY MUD #152	HARRIS	SAN JACINTO	5,956	7,800	9,614	11,410	13,195	14,973
33	HARRIS COUNTY MUD #153	HARRIS	SAN JACINTO	6,887	9,491	12,053	14,589	17,109	19,619
34	HARRIS COUNTY MUD #154	HARRIS	SAN JACINTO	6,485	8,141	9,769	11,381	12,983	14,579
35	HARRIS COUNTY MUD #158	HARRIS	SAN JACINTO	5,487	7,015	7,015	7,015	7,015	7,015
36	HARRIS COUNTY MUD #180	HARRIS	SAN JACINTO	5,339	6,616	7,872	9,115	10,351	11,582
37	HARRIS COUNTY MUD #189	HARRIS	SAN JACINTO	6,588	8,169	9,724	11,263	12,792	14,316
38	HARRIS COUNTY MUD #261	HARRIS	SAN JACINTO	1,374	1,374	1,374	1,374	1,374	1,374
39	HARRIS COUNTY MUD #345	HARRIS	SAN JACINTO	5,285	5,285	5,285	5,285	5,285	5,285
40	HARRIS COUNTY MUD #46	HARRIS	SAN JACINTO	6,326	6,326	6,326	6,326	6,326	6,326
41	HARRIS COUNTY MUD #5	HARRIS	SAN JACINTO	4,062	4,062	4,062	4,062	4,062	4,062
42	HARRIS COUNTY MUD #50	HARRIS	SAN JACINTO	3,334	3,612	3,885	4,156	4,425	4,693
43	HARRIS COUNTY MUD #53	HARRIS	SAN JACINTO	17,972	22,637	27,225	31,767	36,281	40,778
44	HARRIS COUNTY MUD #55	HARRIS	SAN JACINTO-BRAZOS	11,556	11,556	11,556	11,556	11,556	11,556
45	HARRIS COUNTY MUD #8	HARRIS	SAN JACINTO	6,225	6,961	7,685	8,402	9,114	9,823
46	HARRIS COUNTY UD #14	HARRIS	SAN JACINTO	1,699	1,871	2,040	2,208	2,375	2,541
47	HARRIS COUNTY UD #15	HARRIS	SAN JACINTO	3,259	3,792	4,316	4,835	5,351	5,865
48	HARRIS COUNTY WCID #1	HARRIS	SAN JACINTO	9,665	11,283	12,874	14,449	16,014	17,573
49	HARRIS COUNTY WCID #133	HARRIS	SAN JACINTO	4,577	4,652	4,727	4,802	4,877	4,877
50	HARRIS COUNTY WCID #21	HARRIS	SAN JACINTO	10,120	10,724	11,318	11,906	12,490	13,072
51	HARRIS COUNTY WCID #36	HARRIS	SAN JACINTO	10,451	11,572	12,674	13,765	14,849	15,929
52	HARRIS COUNTY WCID #50	HARRIS	SAN JACINTO	4,700	5,284	5,859	6,428	6,993	7,556
53	HARRIS COUNTY WCID #76	HARRIS	SAN JACINTO	1,788	1,788	1,788	1,788	1,788	1,788
54	HARRIS COUNTY WCID #84	HARRIS	SAN JACINTO	2,475	2,519	2,562	2,605	2,648	2,691
55	HEDWIG VILLAGE	HARRIS	SAN JACINTO	2,334	2,334	2,334	2,334	2,334	2,334
56	HILSHIRE VILLAGE	HARRIS	SAN JACINTO	770	770	770	770	770	770
57	HOUSTON	HARRIS	SAN JACINTO	2,083,856	2,342,251	2,596,403	2,847,979	3,097,992	3,347,056
58	HOUSTON	HARRIS	SAN JACINTO-BRAZOS	116,132	130,532	144,696	158,716	172,649	186,529
59	HUMBLE	HARRIS	SAN JACINTO	16,862	19,085	21,272	23,436	25,587	27,730
60	HUNTERS CREEK VILLAGE	HARRIS	SAN JACINTO	4,755	5,126	5,491	5,852	6,211	6,568
61	JACINTO CITY	HARRIS	SAN JACINTO	11,171	12,017	12,849	13,673	14,492	15,308
62	JERSEY VILLAGE	HARRIS	SAN JACINTO	8,742	10,555	12,338	14,103	15,857	17,604

	WUG	COUNTY	BASIN	2011 POPULATIONS					
				2010	2020	2030	2040	2050	2060
63	KATY	HARRIS	SAN JACINTO	17,294	21,438	25,513	29,547	33,556	37,550
64	LA PORTE	HARRIS	SAN JACINTO	1,915	2,104	2,289	2,473	2,655	2,837
65	LA PORTE	HARRIS	SAN JACINTO-BRAZOS	33,552	36,856	40,105	43,321	46,518	49,702
66	LEAGUE CITY	HARRIS	SAN JACINTO-BRAZOS	180	185	190	195	200	205
67	LONGHORN TOWN UD	HARRIS	SAN JACINTO	1,907	2,753	3,585	4,409	5,228	6,044
68	MASON CREEK UD	HARRIS	SAN JACINTO	9,050	9,050	9,050	9,050	9,050	9,050
69	MISSOURI CITY	HARRIS	SAN JACINTO	6,887	8,243	9,577	10,898	12,210	13,517
70	NASSAU BAY	HARRIS	SAN JACINTO-BRAZOS	4,170	4,170	4,170	4,170	4,170	4,170
71	NFBWA	HARRIS	SAN JACINTO	6,954	6,824	6,875	7,244	7,469	7,429
72	NHCRWA	HARRIS	SAN JACINTO	602,401	723,186	816,772	868,302	892,569	915,347
73	NORTH BELT UD	HARRIS	SAN JACINTO	3,916	5,197	6,457	7,705	8,945	10,180
74	NORTH GREEN MUD	HARRIS	SAN JACINTO	3,503	3,935	4,359	4,779	5,197	5,613
75	NORTHWEST HARRIS COUNTY MUD #23	HARRIS	SAN JACINTO	4,482	5,700	6,898	8,084	9,262	10,436
76	NORTHWEST PARK MUD	HARRIS	SAN JACINTO	24,031	29,106	29,992	29,992	29,992	29,992
77	PARKWAY UD	HARRIS	SAN JACINTO	2,911	2,932	2,953	2,974	2,994	3,014
78	PASADENA	HARRIS	SAN JACINTO	126,325	141,544	156,513	171,330	186,055	200,724
79	PASADENA	HARRIS	SAN JACINTO-BRAZOS	35,353	39,612	43,801	47,948	52,069	56,174
80	PEARLAND	HARRIS	SAN JACINTO-BRAZOS	3,074	3,606	4,129	4,647	5,161	5,673
81	PINE TRAILS UTILITY	HARRIS	SAN JACINTO	6,166	6,763	7,350	7,931	8,508	9,083
82	PINEY POINT VILLAGE	HARRIS	SAN JACINTO	3,546	3,708	3,867	4,024	4,180	4,336
83	ROLLING FORK PUD	HARRIS	SAN JACINTO	2,453	2,571	2,689	2,808	2,926	3,044
84	SEABROOK	HARRIS	SAN JACINTO-BRAZOS	11,943	14,377	16,771	19,141	21,496	23,842
85	SHOREACRES	HARRIS	SAN JACINTO-BRAZOS	1,644	1,796	1,945	2,093	2,241	2,389
86	SOUTH HOUSTON	HARRIS	SAN JACINTO	17,307	18,742	20,153	21,550	22,938	24,321
87	SOUTHSIDE PLACE	HARRIS	SAN JACINTO	1,686	1,822	1,956	2,088	2,220	2,351
88	SOUTHWEST UTILITIES	HARRIS	SAN JACINTO	6,341	7,321	8,285	9,239	10,187	11,131
89	SPRING VALLEY	HARRIS	SAN JACINTO	3,810	4,003	4,193	4,381	4,568	4,754
90	STAFFORD	HARRIS	SAN JACINTO	313	316	319	322	325	328
91	SUNBELT FWSD	HARRIS	SAN JACINTO	24,141	28,628	33,041	37,409	41,750	46,075
92	TAYLOR LAKE VILLAGE	HARRIS	SAN JACINTO-BRAZOS	5,472	5,472	5,472	5,472	5,472	5,472
93	TOMBALL	HARRIS	SAN JACINTO	12,059	15,429	18,150	22,954	26,554	31,650
94	TRAIL OF THE LAKES MUD	HARRIS	SAN JACINTO	10,970	10,970	10,970	10,970	10,970	10,970
95	WALLER	HARRIS	SAN JACINTO	586	778	967	1,154	1,340	1,525
96	WEBSTER	HARRIS	SAN JACINTO-BRAZOS	13,076	16,964	20,788	24,573	28,334	32,081
97	WEST HARRIS COUNTY MUD #6	HARRIS	SAN JACINTO	3,500	3,500	3,500	3,500	3,500	3,500
98	WEST UNIVERSITY PL.	HARRIS	SAN JACINTO	15,381	16,520	17,641	18,750	19,852	20,950
99	WHCRWA	HARRIS	SAN JACINTO	317,303	367,954	406,962	434,507	444,915	448,101
100	WILLOW RUN SUBDIVISION	HARRIS	SAN JACINTO	3,663	3,663	3,663	3,663	3,663	3,663
101	WINDFERN FOREST UD	HARRIS	SAN JACINTO	6,584	8,622	8,622	8,622	8,622	8,622
102	WOODCREEK MUD	HARRIS	SAN JACINTO	3,605	4,784	5,944	7,092	8,233	9,369
HARRIS TOTAL				4,078,231	4,629,335	5,180,439	5,731,543	6,282,647	6,833,751
1	BUFFALO	LEON	TRINITY	2,074	2,345	2,506	2,516	2,501	2,521
2	CENTERVILLE	LEON	TRINITY	1,002	1,101	1,160	1,164	1,158	1,165
3	COUNTY-OTHER	LEON	BRAZOS	3,831	4,164	4,362	4,375	4,356	4,381
4	COUNTY-OTHER	LEON	TRINITY	4,150	4,490	4,692	4,704	4,686	4,713
5	FLO COMMUNITY WSC	LEON	TRINITY	5,335	6,894	7,820	7,878	7,791	7,908
6	JEWETT	LEON	BRAZOS	269	322	353	355	352	356
7	JEWETT	LEON	TRINITY	802	959	1,052	1,058	1,049	1,061
8	NORMANGEE	LEON	BRAZOS	217	244	260	260	259	261
9	NORMANGEE	LEON	TRINITY	551	618	658	661	657	662
LEON TOTAL				18,231	21,137	22,863	22,971	22,809	23,028
1	AMES	LIBERTY	TRINITY	1,338	1,623	1,897	2,165	2,459	2,789
2	CLEVELAND	LIBERTY	SAN JACINTO	7,930	8,288	8,631	8,967	9,336	9,749
3	COUNTY-OTHER	LIBERTY	NECHES	1,633	1,968	2,292	2,608	2,955	3,343
4	COUNTY-OTHER	LIBERTY	NECHES-TRINITY	112	135	157	179	203	230
5	COUNTY-OTHER	LIBERTY	SAN JACINTO	13,748	16,579	19,294	21,954	24,870	28,138
6	COUNTY-OTHER	LIBERTY	TRINITY	29,614	34,343	38,878	43,321	48,192	53,650
7	COUNTY-OTHER	LIBERTY	TRINITY-SAN JACINTO	1,985	2,394	2,786	3,170	3,591	4,063
8	DAISETTA	LIBERTY	NECHES	419	438	456	474	493	515
9	DAISETTA	LIBERTY	TRINITY	659	689	717	745	775	809
10	DAYTON	LIBERTY	TRINITY	7,491	9,454	11,336	13,180	15,201	17,467
11	HARDIN	LIBERTY	TRINITY	885	1,028	1,165	1,299	1,446	1,611
12	HARDIN WSC	LIBERTY	TRINITY	3,184	3,828	4,445	5,050	5,713	6,456
13	KENEFFICK	LIBERTY	TRINITY	824	997	1,163	1,325	1,503	1,702
14	LAKE LIVINGSTON WATER SUPPLY & SEWER SERVICE COMPANY	LIBERTY	TRINITY	1,670	1,880	2,081	2,278	2,494	2,736
15	LIBERTY	LIBERTY	TRINITY	8,265	8,520	8,765	9,005	9,268	9,563
16	MERCY WSC	LIBERTY	SAN JACINTO	404	482	557	630	710	800
17	PLUM GROVE	LIBERTY	SAN JACINTO	1,234	1,569	1,890	2,205	2,550	2,937
18	SOUTHWEST UTILITIES	LIBERTY	SAN JACINTO	123	148	172	196	222	251
19	WEST HARDIN WSC	LIBERTY	NECHES	412	535	653	768	894	1,036
LIBERTY TOTAL				81,930	94,898	107,335	119,519	132,875	147,845
1	COUNTY-OTHER	MADISON	BRAZOS	994	1,066	1,124	1,178	1,226	1,268
2	COUNTY-OTHER	MADISON	TRINITY	8,419	9,026	9,508	9,959	10,358	10,708
3	MADISONVILLE	MADISON	TRINITY	4,442	4,725	4,951	5,162	5,349	5,512
4	NORMANGEE	MADISON	TRINITY	50	56	61	65	69	72
MADISON TOTAL				13,905	14,873	15,644	16,364	17,002	17,560
1	CONROE	MONTGOMERY	SAN JACINTO	59,845	78,924	102,013	127,459	161,024	200,007
2	CONSUMERS WATER INC	MONTGOMERY	SAN JACINTO	2,351	2,673	3,397	4,246	5,368	6,672
3	COUNTY-OTHER	MONTGOMERY	SAN JACINTO	166,298	200,411	288,084	392,511	540,106	711,645
4	CRYSTAL SPRNGS WATER COMPANY	MONTGOMERY	SAN JACINTO	6,670	7,945	10,814	14,182	18,629	23,798
5	CUT AND SHOOT	MONTGOMERY	SAN JACINTO	1,515	1,733	2,159	2,655	3,309	4,068
6	EAST PLANTATION UD	MONTGOMERY	SAN JACINTO	2,398	2,839	3,831	4,995	6,532	8,318
7	H M W SUD	MONTGOMERY	SAN JACINTO	11,464	12,796	15,791	19,305	23,947	29,342
8	HOUSTON	MONTGOMERY	SAN JACINTO	1,096	1,486	2,248	3,134	4,303	5,661
9	MAGNOLIA	MONTGOMERY	SAN JACINTO	2,151	3,012	4,054	5,203	6,718	8,478
10	MONTGOMERY	MONTGOMERY	SAN JACINTO	1,200	5,000	7,500	10,000	12,500	15,000
11	MONTGOMERY COUNTY MUD #18	MONTGOMERY	SAN JACINTO	6,928	8,840	13,139	18,185	24,848	32,592
12	MONTGOMERY COUNTY MUD #19	MONTGOMERY	SAN JACINTO	3,200	3,200	3,200	3,200	3,200	3,200
13	MONTGOMERY COUNTY MUD #8	MONTGOMERY	SAN JACINTO	4,060	5,336	6,532	6,967	6,886	6,829
14	MONTGOMERY COUNTY MUD #9	MONTGOMERY	SAN JACINTO	2,840	3,864	4,968	5,478	5,559	5,616
15	MONTGOMERY COUNTY UD #2	MONTGOMERY	SAN JACINTO	3,116	3,116	3,116	3,116	3,116	3,116
16	MONTGOMERY COUNTY UD #3	MONTGOMERY	SAN JACINTO	3,726	3,976	4,537	5,197	6,069	7,081
17	MONTGOMERY COUNTY UD #4	MONTGOMERY	SAN JACINTO	4,972	4,972	4,972	4,972	4,972	4,972
18	MONTGOMERY COUNTY WCID #1	MONTGOMERY	SAN JACINTO	4,157	4,448	5,100	5,867	6,879	8,055
19	NEW CANEY MUD	MONTGOMERY	SAN JACINTO	15,154	17,712	23,465	30,218	39,135	49,499

WUG	COUNTY	BASIN	2011 POPULATIONS						
			2010	2020	2030	2040	2050	2060	
20	OAK RIDGE NORTH	MONTGOMERY	SAN JACINTO	3,743	4,202	5,100	6,144	7,521	9,120
21	PANORAMA VILLAGE	MONTGOMERY	SAN JACINTO	2,160	2,281	2,402	2,523	2,644	2,765
22	PATTON VILLAGE	MONTGOMERY	SAN JACINTO	1,721	1,923	2,318	2,777	3,382	4,085
23	POINT AQUARIUS MUD	MONTGOMERY	SAN JACINTO	3,558	4,429	6,388	8,686	11,722	15,250
24	PORTER WSC	MONTGOMERY	SAN JACINTO	15,087	17,179	21,887	27,412	27,412	27,412
25	RAYFORD ROAD MUD	MONTGOMERY	SAN JACINTO	18,237	18,237	18,237	18,237	18,237	18,237
26	RIVER PLANTATION MUD	MONTGOMERY	SAN JACINTO	3,310	3,310	3,310	3,310	3,310	3,310
27	ROMAN FOREST	MONTGOMERY	SAN JACINTO	4,372	6,934	10,035	13,452	17,959	23,194
28	SHENANDOAH	MONTGOMERY	SAN JACINTO	5,123	5,999	7,059	8,228	9,770	11,560
29	SOUTHERN MONTGOMERY COUNTY MUD	MONTGOMERY	SAN JACINTO	11,087	14,196	14,481	15,034	15,213	15,568
30	SOUTHWEST UTILITIES	MONTGOMERY	SAN JACINTO	2,263	2,582	3,299	4,141	5,253	6,545
31	SPLENDORA	MONTGOMERY	SAN JACINTO	2,017	2,470	3,356	4,386	5,745	7,323
32	SPRING CREEK UD	MONTGOMERY	SAN JACINTO	5,326	6,271	8,397	10,892	14,186	18,015
33	STAGECOACH	MONTGOMERY	SAN JACINTO	626	861	1,185	1,630	2,243	3,086
34	STANLEY LAKE MUD	MONTGOMERY	SAN JACINTO	4,256	5,201	5,201	5,201	5,201	5,201
35	THE WOODLANDS	MONTGOMERY	SAN JACINTO	60,080	111,470	119,300	119,300	119,300	119,300
36	WILLIS	MONTGOMERY	SAN JACINTO	5,695	6,739	8,780	11,153	14,283	17,918
37	WOODBANCH	MONTGOMERY	SAN JACINTO	1,567	1,784	2,047	2,336	2,718	3,161
MONTGOMERY TOTAL				453,369	588,351	751,702	931,732	1,169,199	1,444,999
1	COUNTY-OTHER	POLK	TRINITY	11,800	12,789	13,538	14,167	14,984	15,747
2	LAKE LIVINGSTON WATER SUPPLY & SEWER SERVICE COM	POLK	TRINITY	13,706	15,319	16,590	17,577	18,632	19,641
3	LIVINGSTON	POLK	TRINITY	6,740	8,025	9,061	9,829	10,539	11,232
4	ONALASKA	POLK	TRINITY	1,562	1,944	2,252	2,480	2,691	2,897
5	ONALASKA WSC	POLK	TRINITY	3,764	4,029	4,238	4,400	4,573	4,739
6	TRINITY RURAL WSC	POLK	TRINITY	78	90	100	108	116	124
POLK TOTAL				37,650	42,196	45,779	48,561	51,535	54,380
1	COLDSRING	SAN JACINTO	SAN JACINTO	177	205	228	242	250	254
2	COLDSRING	SAN JACINTO	TRINITY	649	753	836	888	918	932
3	COUNTY-OTHER	SAN JACINTO	SAN JACINTO	7,109	8,130	8,946	9,455	9,750	9,884
4	COUNTY-OTHER	SAN JACINTO	TRINITY	4,076	4,490	4,718	4,303	4,038	3,635
5	LAKE LIVINGSTON WATER SUPPLY & SEWER SERVICE COM	SAN JACINTO	SAN JACINTO	1,467	1,844	2,145	2,333	2,442	2,491
6	LAKE LIVINGSTON WATER SUPPLY & SEWER SERVICE COM	SAN JACINTO	TRINITY	3,165	3,978	4,628	5,033	5,268	5,375
7	MERCY WSC	SAN JACINTO	SAN JACINTO	1,820	2,211	2,523	2,718	2,831	2,882
8	POINT BLANK	SAN JACINTO	TRINITY	662	763	843	893	922	935
9	RIVERSIDE WSC	SAN JACINTO	TRINITY	2,017	2,542	3,066	3,950	4,485	5,011
10	SAN JACINTO WSC	SAN JACINTO	TRINITY	3,697	4,457	5,065	5,444	5,663	5,763
11	SHEPHERD	SAN JACINTO	TRINITY	2,604	3,168	3,619	3,900	4,063	4,137
SAN JACINTO TOTAL				27,443	32,541	36,617	39,159	40,630	41,299
1	COUNTY-OTHER	TRINITY	TRINITY	2,866	3,092	3,167	3,129	3,005	2,891
2	GROVETON	TRINITY	TRINITY	630	680	696	688	660	635
3	LAKE LIVINGSTON WATER SUPPLY & SEWER SERVICE COM	TRINITY	TRINITY	1,673	1,805	1,849	1,826	1,754	1,688
4	TRINITY	TRINITY	TRINITY	3,033	3,273	3,352	3,311	3,180	3,060
5	TRINITY RURAL WSC	TRINITY	TRINITY	3,369	3,635	3,722	3,677	3,532	3,399
TRINITY TOTAL				11,571	12,485	12,786	12,631	12,131	11,673
1	CONSOLIDATED WSC	WALKER	TRINITY	100	110	115	113	114	114
2	COUNTY-OTHER	WALKER	SAN JACINTO	8,148	4,780	5,292	4,769	4,885	4,885
3	COUNTY-OTHER	WALKER	TRINITY	5,924	5,912	6,244	5,293	4,906	4,361
4	HUNTSVILLE	WALKER	SAN JACINTO	35,078	42,877	44,497	44,498	44,498	44,498
5	HUNTSVILLE	WALKER	TRINITY	7,810	9,547	9,908	9,907	9,907	9,907
6	LAKE LIVINGSTON WATER SUPPLY & SEWER SERVICE COM	WALKER	TRINITY	439	484	506	501	502	502
7	NEW WAVERLY	WALKER	SAN JACINTO	1,087	1,199	1,252	1,239	1,242	1,242
8	RIVERSIDE WSC	WALKER	TRINITY	4,472	4,612	4,819	5,550	5,985	6,530
9	TRINITY RURAL WSC	WALKER	TRINITY	267	294	307	304	305	305
10	WALKER COUNTY RURAL WSC	WALKER	TRINITY	7,347	8,100	8,462	8,373	8,393	8,393
WALKER TOTAL				70,672	77,915	81,402	80,547	80,737	80,737
1	BROOKSHIRE	WALLER	BRAZOS	4,616	5,997	7,535	9,246	11,284	13,624
2	COUNTY-OTHER	WALLER	BRAZOS	8,859	9,572	10,366	11,251	12,303	13,512
3	COUNTY-OTHER	WALLER	SAN JACINTO	10,878	13,699	16,840	20,334	24,494	29,275
4	HEMPSTEAD	WALLER	BRAZOS	7,389	10,585	14,143	18,102	22,817	28,232
5	KATY	WALLER	SAN JACINTO	1,462	2,241	3,109	4,074	5,224	6,544
6	PINE ISLAND	WALLER	BRAZOS	1,102	1,402	1,736	2,107	2,549	3,057
7	PRAIRIE VIEW	WALLER	BRAZOS	4,306	4,700	5,139	5,628	6,210	6,878
8	PRAIRIE VIEW	WALLER	SAN JACINTO	474	517	565	619	683	756
9	WALLER	WALLER	SAN JACINTO	2,051	2,462	2,919	3,428	4,034	4,730
WALLER TOTAL				41,137	51,175	62,352	74,789	89,598	106,608
REGION H TOTAL				6,020,078	6,995,442	7,986,480	8,998,002	10,132,237	11,346,082

WUG	COUNTY	BASIN	2011 DEMANDS (ac-ft/yr)						
			2010	2020	2030	2040	2050	2060	
1	BELLVILLE	AUSTIN	BRAZOS	1,192	1,477	1,664	1,760	1,810	1,889
2	COUNTY-OTHER	AUSTIN	BRAZOS	1,047	871	762	692	659	624
3	COUNTY-OTHER	AUSTIN	BRAZOS-COLORADO	281	307	326	334	338	347
4	COUNTY-OTHER	AUSTIN	COLORADO	26	29	31	31	32	33
5	IRRIGATION	AUSTIN	BRAZOS	743	743	743	743	743	743
6	IRRIGATION	AUSTIN	BRAZOS-COLORADO	9,874	9,874	9,874	9,874	9,874	9,874
7	LIVESTOCK	AUSTIN	BRAZOS	1,211	1,211	1,211	1,211	1,211	1,211
8	LIVESTOCK	AUSTIN	BRAZOS-COLORADO	339	339	339	339	339	339
9	LIVESTOCK	AUSTIN	COLORADO	65	65	65	65	65	65
10	MANUFACTURING	AUSTIN	BRAZOS	172	191	208	223	236	257
11	MANUFACTURING	AUSTIN	BRAZOS-COLORADO	38	42	45	49	52	56
12	MINING	AUSTIN	BRAZOS	40	44	47	49	51	53
13	MINING	AUSTIN	BRAZOS-COLORADO	4	4	4	4	5	5
14	MINING	AUSTIN	COLORADO	7	8	8	9	9	9
15	SAN FELIPE	AUSTIN	BRAZOS	124	145	159	167	170	176
16	SEALY	AUSTIN	BRAZOS	1,275	1,635	1,883	2,000	2,060	2,163
17	WALLIS	AUSTIN	BRAZOS-COLORADO	178	194	202	207	209	214
AUSTIN TOTAL				16,616	17,179	17,571	17,757	17,863	18,058
1	ALVIN	BRAZORIA	SAN JACINTO-BRAZOS	3,123	3,293	3,440	3,557	3,743	3,970
2	ANGLETON	BRAZORIA	SAN JACINTO-BRAZOS	2,218	2,225	2,243	2,249	2,307	2,394
3	BAILEY'S PRAIRIE	BRAZORIA	BRAZOS	15	15	15	16	17	17
4	BAILEY'S PRAIRIE	BRAZORIA	SAN JACINTO-BRAZOS	75	78	80	82	85	90
5	BRAZORIA	BRAZORIA	BRAZOS	74	73	72	70	70	71
6	BRAZORIA	BRAZORIA	BRAZOS-COLORADO	229	226	222	215	216	220
7	BRAZORIA COUNTY MUD #1	BRAZORIA	SAN JACINTO-BRAZOS	842	1,214	1,587	1,911	2,271	2,648
8	BRAZORIA COUNTY MUD #2	BRAZORIA	BRAZOS	1,115	1,590	2,050	2,462	2,909	3,376
9	BRAZORIA COUNTY MUD #3	BRAZORIA	SAN JACINTO-BRAZOS	603	872	1,139	1,372	1,631	1,902
10	BRAZORIA COUNTY MUD #4	BRAZORIA	SAN JACINTO-BRAZOS	578	570	562	558	558	558
11	BRAZORIA COUNTY MUD #5	BRAZORIA	SAN JACINTO-BRAZOS	680	669	659	653	653	653
12	BROOKSIDE VILLAGE	BRAZORIA	SAN JACINTO-BRAZOS	266	296	323	348	378	413
13	CLUTE	BRAZORIA	SAN JACINTO-BRAZOS	1,181	1,214	1,265	1,291	1,349	1,425
14	COUNTY-OTHER	BRAZORIA	BRAZOS	126	131	138	143	151	160
15	COUNTY-OTHER	BRAZORIA	BRAZOS-COLORADO	4,237	4,492	4,749	4,955	5,218	5,517
16	COUNTY-OTHER	BRAZORIA	SAN JACINTO-BRAZOS	10,073	11,038	12,233	13,230	14,407	15,715
17	DANBURY	BRAZORIA	SAN JACINTO-BRAZOS	211	222	231	238	250	265
18	FREEPORT	BRAZORIA	BRAZOS	140	135	132	130	129	129
19	FREEPORT	BRAZORIA	SAN JACINTO-BRAZOS	1,752	2,057	2,366	2,633	2,936	3,281
20	HILLCREST	BRAZORIA	SAN JACINTO-BRAZOS	125	126	126	127	130	133
21	HOLIDAY LAKES	BRAZORIA	SAN JACINTO-BRAZOS	92	91	90	89	90	94
22	IOWA COLONY	BRAZORIA	SAN JACINTO-BRAZOS	108	118	126	135	145	156
23	IRRIGATION	BRAZORIA	BRAZOS	4,186	3,816	3,675	3,589	3,589	3,589
24	IRRIGATION	BRAZORIA	BRAZOS-COLORADO	5,536	5,048	4,860	4,747	4,747	4,747
25	IRRIGATION	BRAZORIA	SAN JACINTO-BRAZOS	125,311	114,251	110,009	107,452	107,452	107,452
26	JONES CREEK	BRAZORIA	BRAZOS-COLORADO	98	91	84	76	72	72
27	LAKE JACKSON	BRAZORIA	SAN JACINTO-BRAZOS	4,015	4,332	4,611	4,883	5,210	5,595
28	LIVESTOCK	BRAZORIA	BRAZOS	242	242	242	242	242	242
29	LIVESTOCK	BRAZORIA	BRAZOS-COLORADO	404	404	404	404	404	404
30	LIVESTOCK	BRAZORIA	SAN JACINTO-BRAZOS	968	968	968	968	968	968
31	MANUFACTURING	BRAZORIA	BRAZOS	216,824	238,749	258,151	277,737	295,021	315,974
32	MANUFACTURING	BRAZORIA	BRAZOS-COLORADO	1,184	1,304	1,410	1,517	1,611	1,726
33	MANUFACTURING	BRAZORIA	SAN JACINTO-BRAZOS	42,231	46,501	50,280	54,094	57,461	61,541
34	MANVEL	BRAZORIA	SAN JACINTO-BRAZOS	526	511	496	480	470	470
35	MINING	BRAZORIA	BRAZOS	307	337	354	372	389	405
36	MINING	BRAZORIA	BRAZOS-COLORADO	2,852	3,128	3,292	3,452	3,614	3,766
37	MINING	BRAZORIA	SAN JACINTO-BRAZOS	945	1,037	1,091	1,145	1,198	1,248
38	ORBIT SYSTEMS INC	BRAZORIA	BRAZOS-COLORADO	47	55	63	71	79	88
39	ORBIT SYSTEMS INC	BRAZORIA	SAN JACINTO-BRAZOS	386	451	514	575	638	712
40	OYSTER CREEK	BRAZORIA	SAN JACINTO-BRAZOS	166	188	210	229	251	277
41	PEARLAND	BRAZORIA	SAN JACINTO-BRAZOS	11,965	14,925	17,508	19,949	22,681	25,525
42	RICHWOOD	BRAZORIA	SAN JACINTO-BRAZOS	341	354	363	370	386	408
43	SOUTHWEST UTILITIES	BRAZORIA	SAN JACINTO-BRAZOS	71	73	75	77	79	83
44	SURFSIDE BEACH	BRAZORIA	BRAZOS	168	189	209	228	248	271
45	SWEENEY	BRAZORIA	BRAZOS-COLORADO	606	636	663	684	717	757
46	VARNER CREEK UD	BRAZORIA	BRAZOS	359	428	494	556	622	694
47	WEST COLUMBIA	BRAZORIA	BRAZOS	481	457	434	413	395	385
48	WEST COLUMBIA	BRAZORIA	BRAZOS-COLORADO	92	88	84	79	76	74
BRAZORIA TOTAL				448,174	469,308	494,392	520,853	548,263	580,660
1	ANAHUAC	CHAMBERS	NECHES-TRINITY	274	292	307	318	334	353
2	ANAHUAC	CHAMBERS	TRINITY	79	84	89	92	97	102
3	BAYTOWN	CHAMBERS	TRINITY-SAN JACINTO	606	661	712	752	802	859
4	BEACH CITY	CHAMBERS	TRINITY	39	51	62	72	82	93
5	BEACH CITY	CHAMBERS	TRINITY-SAN JACINTO	275	362	439	507	580	654
6	COUNTY-OTHER	CHAMBERS	NECHES-TRINITY	50	48	46	44	43	42
7	COUNTY-OTHER	CHAMBERS	TRINITY	251	240	230	220	213	210
8	COUNTY-OTHER	CHAMBERS	TRINITY-SAN JACINTO	162	155	148	142	137	135
9	IRRIGATION	CHAMBERS	NECHES-TRINITY	83,269	83,269	83,269	83,269	83,269	83,269
10	IRRIGATION	CHAMBERS	TRINITY	32,741	32,741	32,741	32,741	32,741	32,741
11	IRRIGATION	CHAMBERS	TRINITY-SAN JACINTO	1,767	1,767	1,767	1,767	1,767	1,767
12	LIVESTOCK	CHAMBERS	NECHES-TRINITY	333	333	333	333	333	333
13	LIVESTOCK	CHAMBERS	TRINITY	60	60	60	60	60	60
14	LIVESTOCK	CHAMBERS	TRINITY-SAN JACINTO	69	69	69	69	69	69
15	MANUFACTURING	CHAMBERS	TRINITY-SAN JACINTO	11,802	12,959	13,987	15,011	15,932	17,122
16	MINING	CHAMBERS	NECHES-TRINITY	639	692	725	756	788	816
17	MINING	CHAMBERS	TRINITY	28,240	30,587	32,017	33,420	34,811	36,027
18	MINING	CHAMBERS	TRINITY-SAN JACINTO	8,543	9,253	9,685	10,110	10,531	10,899
19	MONT BELVIEU	CHAMBERS	TRINITY	669	870	1,055	1,215	1,382	1,553
20	MONT BELVIEU	CHAMBERS	TRINITY-SAN JACINTO	314	408	494	570	648	728
21	OLD RIVER-WINFREE	CHAMBERS	TRINITY	208	225	238	248	263	280
22	STEAM ELECTRIC POWER	CHAMBERS	TRINITY-SAN JACINTO	4,435	3,536	4,134	4,863	5,751	6,834
23	TRINITY BAY CONSERVATION DISTRICT	CHAMBERS	NECHES-TRINITY	1,412	1,686	1,940	2,167	2,392	2,644
24	TRINITY BAY CONSERVATION DISTRICT	CHAMBERS	TRINITY	646	772	888	991	1,094	1,210
CHAMBERS TOTAL				176,883	181,120	185,435	189,737	194,119	198,800
1	ARCOLA	FORT BEND	SAN JACINTO-BRAZOS	403	434	474	514	566	622

WUG	COUNTY	BASIN	2011 DEMANDS (ac-ft/yr)						
			2010	2020	2030	2040	2050	2060	
2	BEASLEY	FORT BEND	BRAZOS	8	9	10	12	14	16
3	BEASLEY	FORT BEND	BRAZOS-COLORADO	84	95	108	122	142	166
4	COUNTY-OTHER	FORT BEND	BRAZOS	2,728	1,102	4,855	9,655	19,248	30,655
5	COUNTY-OTHER	FORT BEND	BRAZOS-COLORADO	221	67	177	235	313	334
6	COUNTY-OTHER	FORT BEND	SAN JACINTO	114	93	117	618	1,914	3,386
7	COUNTY-OTHER	FORT BEND	SAN JACINTO-BRAZOS	502	463	372	4,110	12,370	21,545
8	FAIRCHILDS	FORT BEND	BRAZOS	406	515	650	787	971	1,182
9	FIRST COLONY MUD #9	FORT BEND	BRAZOS	1,392	1,425	1,467	1,508	1,559	1,609
10	FORT BEND COUNTY MUD #106	FORT BEND	BRAZOS	968	960	960	957	957	957
11	FORT BEND COUNTY MUD #108	FORT BEND	BRAZOS	587	577	574	571	571	571
12	FORT BEND COUNTY MUD #111	FORT BEND	BRAZOS	780	772	772	769	769	769
13	FORT BEND COUNTY MUD #23	FORT BEND	SAN JACINTO-BRAZOS	1,426	2,018	2,016	2,016	2,017	2,017
14	FORT BEND COUNTY MUD #25	FORT BEND	SAN JACINTO-BRAZOS	1,587	2,224	3,009	3,803	4,877	6,104
15	FORT BEND COUNTY MUD #67	FORT BEND	BRAZOS	830	821	816	813	813	813
16	FORT BEND COUNTY MUD #68	FORT BEND	BRAZOS	604	600	600	600	600	600
17	FORT BEND COUNTY MUD #69	FORT BEND	BRAZOS	479	479	477	477	477	477
18	FORT BEND COUNTY MUD #81	FORT BEND	BRAZOS	773	1,033	1,349	1,675	2,108	2,602
19	FULSHEAR	FORT BEND	BRAZOS	211	267	335	404	496	603
20	FULSHEAR	FORT BEND	SAN JACINTO-BRAZOS	138	174	219	264	323	394
21	HOUSTON	FORT BEND	SAN JACINTO	4,068	4,667	5,386	6,136	7,166	8,391
22	HOUSTON	FORT BEND	SAN JACINTO-BRAZOS	2,857	3,277	3,782	4,310	5,033	5,893
23	IRRIGATION	FORT BEND	BRAZOS	17,907	17,907	17,907	17,907	17,907	17,907
24	IRRIGATION	FORT BEND	BRAZOS-COLORADO	18,869	18,869	18,869	18,869	18,869	18,869
25	IRRIGATION	FORT BEND	SAN JACINTO	7,538	7,538	7,538	7,538	7,538	7,538
26	IRRIGATION	FORT BEND	SAN JACINTO-BRAZOS	9,141	9,141	9,141	9,141	9,141	9,141
27	KATY	FORT BEND	SAN JACINTO	287	374	484	597	745	919
28	KENDLETON	FORT BEND	BRAZOS-COLORADO	151	194	251	324	418	539
29	LIVESTOCK	FORT BEND	BRAZOS	691	691	691	691	691	691
30	LIVESTOCK	FORT BEND	BRAZOS-COLORADO	211	211	211	211	211	211
31	LIVESTOCK	FORT BEND	SAN JACINTO	70	70	70	70	70	70
32	LIVESTOCK	FORT BEND	SAN JACINTO-BRAZOS	199	199	199	199	199	199
33	MANUFACTURING	FORT BEND	BRAZOS	1,235	1,296	1,344	1,383	1,409	1,334
34	MANUFACTURING	FORT BEND	SAN JACINTO	1,979	2,076	2,154	2,216	2,258	2,137
35	MANUFACTURING	FORT BEND	SAN JACINTO-BRAZOS	3,649	3,827	3,970	4,086	4,162	3,939
36	MEADOWS	FORT BEND	SAN JACINTO	1,887	1,859	1,838	1,817	1,809	1,809
37	MEADOWS	FORT BEND	SAN JACINTO-BRAZOS	188	185	183	181	180	180
38	MINING	FORT BEND	BRAZOS	618	630	638	644	651	656
39	MINING	FORT BEND	BRAZOS-COLORADO	140	144	144	146	147	149
40	MINING	FORT BEND	SAN JACINTO	280	285	289	292	295	297
41	MINING	FORT BEND	SAN JACINTO-BRAZOS	1,972	2,011	2,034	2,056	2,076	2,094
42	MISSOURI CITY	FORT BEND	BRAZOS	315	390	466	545	603	733
43	MISSOURI CITY	FORT BEND	SAN JACINTO	2,577	3,195	3,817	4,460	4,938	6,004
44	MISSOURI CITY	FORT BEND	SAN JACINTO-BRAZOS	11,664	14,464	17,280	20,186	22,351	27,175
45	NEEDVILLE	FORT BEND	BRAZOS	207	250	304	359	436	527
46	NEEDVILLE	FORT BEND	BRAZOS-COLORADO	250	303	368	435	527	637
47	NFBWA	FORT BEND	BRAZOS	1,294	2,063	3,050	4,194	5,962	8,179
48	NFBWA	FORT BEND	SAN JACINTO	18,990	25,342	30,377	33,900	34,838	34,633
49	NFBWA	FORT BEND	SAN JACINTO-BRAZOS	12,739	27,398	38,659	48,881	58,079	66,749
50	ORBIT SYSTEMS INC	FORT BEND	SAN JACINTO-BRAZOS	15	16	18	20	22	25
51	PECAN GROVE MUD #1	FORT BEND	BRAZOS	2,301	2,321	2,339	2,368	2,441	2,539
52	PECAN GROVE MUD #1	FORT BEND	SAN JACINTO-BRAZOS	612	617	622	629	649	675
53	PLANTATION MUD	FORT BEND	SAN JACINTO-BRAZOS	573	554	544	534	530	530
54	PLEAK	FORT BEND	BRAZOS	547	646	770	895	1,063	1,256
55	RICHMOND	FORT BEND	BRAZOS	2,252	2,324	2,764	3,189	3,915	4,717
56	ROSENBERG	FORT BEND	BRAZOS	5,156	6,405	7,932	9,502	11,637	14,171
57	SIENNA PLANTATION MUD #2	FORT BEND	SAN JACINTO-BRAZOS	1,061	1,212	1,212	1,205	1,205	1,205
58	SIMONTON	FORT BEND	BRAZOS	419	497	592	689	816	967
59	STAFFORD	FORT BEND	SAN JACINTO	333	434	552	677	852	1,052
60	STAFFORD	FORT BEND	SAN JACINTO-BRAZOS	1,395	1,820	2,317	2,839	3,573	4,411
61	STEAM ELECTRIC POWER	FORT BEND	BRAZOS	66,026	68,046	79,553	93,582	110,682	131,527
62	SUGAR LAND	FORT BEND	BRAZOS	8,223	9,859	10,111	10,063	10,063	10,063
63	SUGAR LAND	FORT BEND	SAN JACINTO	824	987	1,013	1,008	1,008	1,008
64	SUGAR LAND	FORT BEND	SAN JACINTO-BRAZOS	11,234	13,468	13,813	13,747	13,747	13,747
65	WHCRWA	FORT BEND	SAN JACINTO	3,208	3,771	4,350	5,089	5,819	6,532
FORT BEND TOTAL				240,393	275,961	319,303	367,720	427,836	497,447
1	BACLIFF MUD	GALVESTON	SAN JACINTO-BRAZOS	552	572	569	560	557	562
2	BAYOU VISTA	GALVESTON	SAN JACINTO-BRAZOS	429	458	471	475	478	482
3	BOLIVAR PENINSULAR SUD	GALVESTON	NECHES-TRINITY	1,123	1,201	1,240	1,251	1,261	1,272
4	CLEAR LAKE SHORES	GALVESTON	SAN JACINTO-BRAZOS	282	287	289	287	287	289
5	COUNTY-OTHER	GALVESTON	NECHES-TRINITY	0	0	1	0	0	1
6	COUNTY-OTHER	GALVESTON	SAN JACINTO-BRAZOS	1,098	948	850	795	764	749
7	DICKINSON	GALVESTON	SAN JACINTO-BRAZOS	3,085	3,416	3,586	3,620	3,657	3,699
8	FRIENDSWOOD	GALVESTON	SAN JACINTO-BRAZOS	3,245	3,532	3,652	3,638	3,666	3,707
9	GALVESTON	GALVESTON	SAN JACINTO-BRAZOS	16,095	15,903	15,711	15,518	15,390	15,390
10	GALVESTON COUNTY MUD #1	GALVESTON	SAN JACINTO-BRAZOS	426	483	514	525	532	540
11	GALVESTON COUNTY WCID #12	GALVESTON	SAN JACINTO-BRAZOS	267	296	312	316	320	324
12	HITCHCOCK	GALVESTON	SAN JACINTO-BRAZOS	933	935	930	914	911	915
13	IRRIGATION	GALVESTON	SAN JACINTO-BRAZOS	10,342	10,342	10,342	10,342	10,342	10,342
14	JAMAICA BEACH	GALVESTON	SAN JACINTO-BRAZOS	300	344	368	377	383	389
15	KEMAH	GALVESTON	SAN JACINTO-BRAZOS	278	322	348	356	360	366
16	LA MARQUE	GALVESTON	SAN JACINTO-BRAZOS	2,161	2,115	2,069	2,023	1,992	1,992
17	LEAGUE CITY	GALVESTON	SAN JACINTO-BRAZOS	7,477	8,253	8,674	8,751	8,840	8,947
18	LIVESTOCK	GALVESTON	NECHES-TRINITY	16	16	16	16	16	16
19	LIVESTOCK	GALVESTON	SAN JACINTO-BRAZOS	309	309	309	309	309	309
20	MANUFACTURING	GALVESTON	SAN JACINTO-BRAZOS	41,005	44,330	47,046	49,692	51,967	55,491
21	MINING	GALVESTON	NECHES-TRINITY	136	143	147	150	154	158
22	MINING	GALVESTON	SAN JACINTO-BRAZOS	129	136	139	143	146	149
23	SAN LEON MUD	GALVESTON	SAN JACINTO-BRAZOS	632	670	680	676	677	684
24	SANTA FE	GALVESTON	SAN JACINTO-BRAZOS	988	990	982	956	951	956
25	STEAM ELECTRIC POWER	GALVESTON	SAN JACINTO-BRAZOS	5,034	4,013	4,692	5,519	6,528	7,757
26	TEXAS CITY	GALVESTON	SAN JACINTO-BRAZOS	6,476	6,383	6,269	6,138	6,051	6,056
27	TIKI ISLAND	GALVESTON	SAN JACINTO-BRAZOS	243	282	303	311	316	321
GALVESTON TOTAL				103,061	106,679	110,509	113,658	116,855	121,863

WUG	COUNTY	BASIN	2011 DEMANDS (ac-ft/yr)						
			2010	2020	2030	2040	2050	2060	
1	BAYTOWN	HARRIS	SAN JACINTO	624	625	628	631	643	659
2	BAYTOWN	HARRIS	TRINITY-SAN JACINTO	10,531	10,537	10,599	10,645	10,841	11,114
3	BELLAIRE	HARRIS	SAN JACINTO	3,734	3,993	4,254	4,527	4,817	5,131
4	BLUE BELL MANOR UTILITY COMPANY	HARRIS	SAN JACINTO	572	563	555	546	540	540
5	BRITMOORE UTILITIES	HARRIS	SAN JACINTO	471	550	626	705	783	864
6	BUNKER HILL VILLAGE	HARRIS	SAN JACINTO	1,504	1,491	1,479	1,466	1,462	1,462
7	CANDLELIGHT HILLS SUBDIVISION	HARRIS	SAN JACINTO	451	530	610	691	770	853
8	CHCRWA	HARRIS	SAN JACINTO	4,637	6,433	6,433	6,433	6,433	6,433
9	CHIMNEY HILL MUD	HARRIS	SAN JACINTO	668	646	625	618	611	611
10	CLEAR BROOK CITY MUD WOODMEADOWS	HARRIS	SAN JACINTO	1,003	1,089	1,189	1,281	1,384	1,503
11	CONSUMERS WATER INC	HARRIS	SAN JACINTO	399	524	653	767	897	1,026
12	COUNTY-OTHER	HARRIS	SAN JACINTO	6,030	5,971	14,834	34,063	60,356	88,146
13	COUNTY-OTHER	HARRIS	SAN JACINTO-BRAZOS	2,621	2,045	2,512	2,030	1,966	2,014
14	COUNTY-OTHER	HARRIS	TRINITY-SAN JACINTO	2,373	1,776	1,997	1,370	969	645
15	CROSBY MUD	HARRIS	SAN JACINTO	897	964	1,028	1,091	1,157	1,237
16	CRYSTAL SPRNGS WATER COMPANY	HARRIS	SAN JACINTO	21	27	33	39	45	51
17	DEER PARK	HARRIS	SAN JACINTO	1,723	1,725	1,737	1,746	1,782	1,832
18	DEER PARK	HARRIS	SAN JACINTO-BRAZOS	2,641	2,645	2,664	2,678	2,732	2,809
19	EL DORADO UD	HARRIS	SAN JACINTO	465	507	544	584	627	675
20	EL LAGO	HARRIS	SAN JACINTO-BRAZOS	534	524	513	503	496	496
21	FOUNTAINVIEW SUBDIVISION	HARRIS	SAN JACINTO	341	389	438	483	532	585
22	FRIENDSWOOD	HARRIS	SAN JACINTO-BRAZOS	1,031	1,005	979	952	944	944
23	GALENA PARK	HARRIS	SAN JACINTO	1,231	1,234	1,245	1,252	1,285	1,332
24	GREEN TRAILS MUD	HARRIS	SAN JACINTO	917	1,036	1,158	1,276	1,396	1,520
25	HARRIS COUNTY FWSD #47	HARRIS	SAN JACINTO	423	408	394	380	370	370
26	HARRIS COUNTY FWSD #51	HARRIS	SAN JACINTO	2,536	2,473	2,451	2,409	2,409	2,409
27	HARRIS COUNTY FWSD #6	HARRIS	SAN JACINTO	346	396	441	494	544	601
28	HARRIS COUNTY MUD #11	HARRIS	SAN JACINTO	417	470	523	574	627	686
29	HARRIS COUNTY MUD #119 INWOOD NORTH	HARRIS	SAN JACINTO	878	919	899	880	870	870
30	HARRIS COUNTY MUD #132	HARRIS	SAN JACINTO	1,755	2,176	2,579	2,986	3,385	3,801
31	HARRIS COUNTY MUD #151	HARRIS	SAN JACINTO	1,275	1,267	1,259	1,250	1,250	1,250
32	HARRIS COUNTY MUD #152	HARRIS	SAN JACINTO	787	1,014	1,228	1,444	1,670	1,895
33	HARRIS COUNTY MUD #153	HARRIS	SAN JACINTO	1,227	1,669	2,106	2,533	2,971	3,406
34	HARRIS COUNTY MUD #154	HARRIS	SAN JACINTO	676	830	974	1,122	1,265	1,421
35	HARRIS COUNTY MUD #158	HARRIS	SAN JACINTO	486	597	589	574	574	574
36	HARRIS COUNTY MUD #180	HARRIS	SAN JACINTO	616	741	864	990	1,113	1,245
37	HARRIS COUNTY MUD #189	HARRIS	SAN JACINTO	804	970	1,133	1,299	1,462	1,636
38	HARRIS COUNTY MUD #261	HARRIS	SAN JACINTO	870	867	865	865	865	865
39	HARRIS COUNTY MUD #345	HARRIS	SAN JACINTO	1,415	1,403	1,403	1,397	1,397	1,397
40	HARRIS COUNTY MUD #46	HARRIS	SAN JACINTO	836	822	808	801	801	801
41	HARRIS COUNTY MUD #5	HARRIS	SAN JACINTO	655	642	628	614	605	605
42	HARRIS COUNTY MUD #50	HARRIS	SAN JACINTO	620	655	696	731	773	820
43	HARRIS COUNTY MUD #53	HARRIS	SAN JACINTO	1,933	2,384	2,806	3,238	3,658	4,111
44	HARRIS COUNTY MUD #55	HARRIS	SAN JACINTO-BRAZOS	1,502	1,463	1,424	1,385	1,359	1,359
45	HARRIS COUNTY MUD #8	HARRIS	SAN JACINTO	697	756	809	866	929	1,001
46	HARRIS COUNTY UD #14	HARRIS	SAN JACINTO	582	635	686	737	790	845
47	HARRIS COUNTY UD #15	HARRIS	SAN JACINTO	427	484	541	596	653	716
48	HARRIS COUNTY WCID #1	HARRIS	SAN JACINTO	1,115	1,264	1,413	1,554	1,704	1,870
49	HARRIS COUNTY WCID #133	HARRIS	SAN JACINTO	754	750	747	737	743	743
50	HARRIS COUNTY WCID #21	HARRIS	SAN JACINTO	1,417	1,466	1,509	1,547	1,609	1,684
51	HARRIS COUNTY WCID #36	HARRIS	SAN JACINTO	1,346	1,452	1,547	1,650	1,763	1,891
52	HARRIS COUNTY WCID #50	HARRIS	SAN JACINTO	605	663	715	770	830	897
53	HARRIS COUNTY WCID #76	HARRIS	SAN JACINTO	296	290	284	278	274	274
54	HARRIS COUNTY WCID #84	HARRIS	SAN JACINTO	602	604	606	604	611	621
55	HEDWIG VILLAGE	HARRIS	SAN JACINTO	831	824	816	808	803	803
56	HILSHIRE VILLAGE	HARRIS	SAN JACINTO	191	188	185	183	182	182
57	HOUSTON	HARRIS	SAN JACINTO	361,804	398,796	433,343	468,951	506,649	547,381
58	HOUSTON	HARRIS	SAN JACINTO-BRAZOS	20,163	22,225	24,150	26,134	28,235	30,505
59	HUMBLE	HARRIS	SAN JACINTO	3,664	4,062	4,456	4,857	5,274	5,715
60	HUNTERS CREEK VILLAGE	HARRIS	SAN JACINTO	1,747	1,866	1,981	2,091	2,212	2,340
61	IRRIGATION	HARRIS	SAN JACINTO	9,883	9,883	9,883	9,883	9,883	9,883
62	IRRIGATION	HARRIS	TRINITY-SAN JACINTO	5,417	5,417	5,417	5,417	5,417	5,417
63	JACINTO CITY	HARRIS	SAN JACINTO	1,301	1,346	1,410	1,455	1,526	1,612
64	JERSEY VILLAGE	HARRIS	SAN JACINTO	1,586	1,880	2,170	2,464	2,753	3,056
65	KATY	HARRIS	SAN JACINTO	3,197	3,867	4,544	5,230	5,902	6,604
66	LA PORTE	HARRIS	SAN JACINTO	287	306	328	346	369	394
67	LA PORTE	HARRIS	SAN JACINTO-BRAZOS	5,036	5,367	5,750	6,066	6,461	6,904
68	LEAGUE CITY	HARRIS	SAN JACINTO-BRAZOS	26	26	26	26	27	27
69	LIVESTOCK	HARRIS	SAN JACINTO	951	951	951	951	951	951
70	LIVESTOCK	HARRIS	SAN JACINTO-BRAZOS	91	91	91	91	91	91
71	LIVESTOCK	HARRIS	TRINITY-SAN JACINTO	91	91	91	91	91	91
72	LONGHORN TOWN UD	HARRIS	SAN JACINTO	596	857	1,112	1,368	1,622	1,875
73	MANUFACTURING	HARRIS	SAN JACINTO	256,465	275,094	290,934	304,964	315,464	310,194
74	MANUFACTURING	HARRIS	SAN JACINTO-BRAZOS	66,918	71,779	75,911	79,572	82,312	80,937
75	MANUFACTURING	HARRIS	TRINITY-SAN JACINTO	72,614	77,888	82,373	86,345	89,318	87,826
76	MASON CREEK UD	HARRIS	SAN JACINTO	2,352	2,321	2,291	2,271	2,261	2,261
77	MINING	HARRIS	SAN JACINTO	1,258	1,407	1,500	1,593	1,688	1,771
78	MINING	HARRIS	SAN JACINTO-BRAZOS	24	27	29	31	32	34
79	MISSOURI CITY	HARRIS	SAN JACINTO	1,306	1,540	1,786	2,035	2,296	2,554
80	NASSAU BAY	HARRIS	SAN JACINTO-BRAZOS	1,028	1,014	1,000	986	976	976
81	NFBWA	HARRIS	SAN JACINTO	1,636	1,597	1,537	1,458	1,361	1,254
82	NHCRWA	HARRIS	SAN JACINTO	116,062	136,903	152,789	161,456	164,968	169,178
83	NORTH BELT UD	HARRIS	SAN JACINTO	461	600	731	863	1,002	1,140
84	NORTH GREEN MUD	HARRIS	SAN JACINTO	349	379	405	434	466	503
85	NORTHWEST HARRIS COUNTY MUD #23	HARRIS	SAN JACINTO	587	728	873	1,005	1,152	1,298
86	NORTHWEST PARK MUD	HARRIS	SAN JACINTO	2,909	3,423	3,427	3,359	3,326	3,326
87	PARKWAY UD	HARRIS	SAN JACINTO	303	296	288	280	275	277
88	PASADENA	HARRIS	SAN JACINTO	15,990	17,440	18,759	20,151	21,674	23,383
89	PASADENA	HARRIS	SAN JACINTO-BRAZOS	4,475	4,881	5,250	5,639	6,066	6,544
90	PEARLAND	HARRIS	SAN JACINTO-BRAZOS	445	513	579	646	717	788
91	PINE TRAILS UTILITY	HARRIS	SAN JACINTO	939	1,008	1,070	1,137	1,210	1,292
92	PINEY POINT VILLAGE	HARRIS	SAN JACINTO	1,275	1,317	1,360	1,402	1,451	1,506
93	ROLLING FORK PUD	HARRIS	SAN JACINTO	706	729	753	777	806	839

WUG	COUNTY	BASIN	2011 DEMANDS (ac-ft/yr)						
			2010	2020	2030	2040	2050	2060	
94	SEABROOK	HARRIS	SAN JACINTO-BRAZOS	2,421	2,867	3,288	3,731	4,166	4,620
95	SHOREACRES	HARRIS	SAN JACINTO-BRAZOS	204	217	229	239	237	237
96	SOUTH HOUSTON	HARRIS	SAN JACINTO	2,288	2,393	2,528	2,631	2,775	2,942
97	SOUTHSIDE PLACE	HARRIS	SAN JACINTO	406	433	458	482	510	540
98	SOUTHWEST UTILITIES	HARRIS	SAN JACINTO	710	795	882	962	1,050	1,147
99	SPRING VALLEY	HARRIS	SAN JACINTO	888	915	944	972	1,008	1,049
100	STAFFORD	HARRIS	SAN JACINTO	23	23	23	22	23	23
101	STEAM ELECTRIC POWER	HARRIS	SAN JACINTO	7,284	22,585	26,405	31,062	36,738	43,656
102	STEAM ELECTRIC POWER	HARRIS	SAN JACINTO-BRAZOS	444	1,377	1,610	1,893	2,239	2,661
103	SUNBELT FWSD	HARRIS	SAN JACINTO	4,489	5,227	5,922	6,663	7,389	8,154
104	TAYLOR LAKE VILLAGE	HARRIS	SAN JACINTO-BRAZOS	908	889	871	852	846	846
105	TOMBALL	HARRIS	SAN JACINTO	2,621	3,301	3,842	4,834	5,562	6,630
106	TRAIL OF THE LAKES MUD	HARRIS	SAN JACINTO	1,413	1,376	1,364	1,339	1,339	1,339
107	WALLER	HARRIS	SAN JACINTO	119	154	190	225	260	296
108	WEBSTER	HARRIS	SAN JACINTO-BRAZOS	2,417	3,097	3,772	4,432	5,110	5,786
109	WEST HARRIS COUNTY MUD #6	HARRIS	SAN JACINTO	565	561	561	549	541	541
110	WEST UNIVERSITY PL.	HARRIS	SAN JACINTO	3,101	3,275	3,438	3,591	3,780	3,989
111	WHCRWA	HARRIS	SAN JACINTO	60,067	67,747	73,904	78,344	79,642	80,217
112	WILLOW RUN SUBDIVISION	HARRIS	SAN JACINTO	665	652	640	628	620	620
113	WINDFERN FOREST UD	HARRIS	SAN JACINTO	804	1,033	1,014	1,004	1,004	1,004
114	WOODCREEK MUD	HARRIS	SAN JACINTO	622	815	999	1,184	1,374	1,564
HARRIS TOTAL				1,130,740	1,256,018	1,363,495	1,470,137	1,574,824	1,662,719
1	BUFFALO	LEON	TRINITY	348	384	401	397	392	395
2	CENTERVILLE	LEON	TRINITY	189	203	210	207	205	206
3	COUNTY-OTHER	LEON	BRAZOS	395	416	421	412	405	408
4	COUNTY-OTHER	LEON	TRINITY	428	448	452	443	436	439
5	FLO COMMUNITY WSC	LEON	TRINITY	418	525	578	574	559	567
6	IRRIGATION	LEON	TRINITY	542	542	542	542	542	542
7	JEWETT	LEON	BRAZOS	51	60	64	64	63	64
8	JEWETT	LEON	TRINITY	151	177	192	191	188	190
9	LIVESTOCK	LEON	BRAZOS	423	423	423	423	423	423
10	LIVESTOCK	LEON	TRINITY	1,268	1,268	1,268	1,268	1,268	1,268
11	MANUFACTURING	LEON	TRINITY	714	842	967	1,093	1,207	1,313
12	MINING	LEON	BRAZOS	221	213	209	205	201	198
13	MINING	LEON	TRINITY	1,296	1,251	1,226	1,204	1,183	1,166
14	NORMANGEE	LEON	BRAZOS	42	46	49	48	47	48
15	NORMANGEE	LEON	TRINITY	106	117	122	120	119	120
LEON TOTAL				6,592	6,915	7,124	7,191	7,238	7,347
1	AMES	LIBERTY	TRINITY	137	159	179	197	221	250
2	CLEVELAND	LIBERTY	SAN JACINTO	1,341	1,365	1,392	1,416	1,464	1,529
3	COUNTY-OTHER	LIBERTY	NECHES	154	179	203	228	255	288
4	COUNTY-OTHER	LIBERTY	NECHES-TRINITY	11	12	14	16	18	20
5	COUNTY-OTHER	LIBERTY	SAN JACINTO	1,294	1,504	1,707	1,918	2,145	2,427
6	COUNTY-OTHER	LIBERTY	TRINITY	2,787	3,116	3,441	3,786	4,157	4,628
7	COUNTY-OTHER	LIBERTY	TRINITY-SAN JACINTO	187	217	247	277	310	350
8	DAISETTA	LIBERTY	NECHES	58	59	60	61	62	65
9	DAISETTA	LIBERTY	TRINITY	91	93	94	95	98	102
10	DAYTON	LIBERTY	TRINITY	1,737	2,161	2,553	2,924	3,355	3,855
11	HARDIN	LIBERTY	TRINITY	136	155	172	191	211	235
12	HARDIN WSC	LIBERTY	TRINITY	567	669	767	865	973	1,099
13	IRRIGATION	LIBERTY	NECHES	3,317	3,317	3,317	3,317	3,317	3,317
14	IRRIGATION	LIBERTY	NECHES-TRINITY	8,289	8,289	8,289	8,289	8,289	8,289
15	IRRIGATION	LIBERTY	SAN JACINTO	830	830	830	830	830	830
16	IRRIGATION	LIBERTY	TRINITY	53,056	53,056	53,056	53,056	53,056	53,056
17	IRRIGATION	LIBERTY	TRINITY-SAN JACINTO	17,409	17,409	17,409	17,409	17,409	17,409
18	KENEFICK	LIBERTY	TRINITY	94	112	128	144	162	183
19	LAKE LIVINGSTON WATER SUPPLY & SEWER SERVICE COMPANY	LIBERTY	TRINITY	108	116	124	130	140	153
20	LIBERTY	LIBERTY	TRINITY	1,509	1,527	1,532	1,543	1,578	1,628
21	LIVESTOCK	LIBERTY	NECHES	104	104	104	104	104	104
22	LIVESTOCK	LIBERTY	NECHES-TRINITY	35	35	35	35	35	35
23	LIVESTOCK	LIBERTY	SAN JACINTO	140	140	140	140	140	140
24	LIVESTOCK	LIBERTY	TRINITY	446	446	446	446	446	446
25	LIVESTOCK	LIBERTY	TRINITY-SAN JACINTO	32	32	32	32	32	32
26	MANUFACTURING	LIBERTY	SAN JACINTO	331	391	452	514	570	619
27	MANUFACTURING	LIBERTY	TRINITY	62	74	85	97	108	117
28	MERCY WSC	LIBERTY	SAN JACINTO	75	88	100	113	126	142
29	MINING	LIBERTY	NECHES	32	32	32	32	32	33
30	MINING	LIBERTY	NECHES-TRINITY	23	23	23	24	23	22
31	MINING	LIBERTY	SAN JACINTO	34	34	34	34	35	35
32	MINING	LIBERTY	TRINITY	4,924	4,937	4,945	4,951	4,958	4,963
33	MINING	LIBERTY	TRINITY-SAN JACINTO	3,717	3,727	3,732	3,737	3,742	3,747
34	PLUM GROVE	LIBERTY	SAN JACINTO	141	176	207	240	277	319
35	SOUTHWEST UTILITIES	LIBERTY	SAN JACINTO	14	16	18	20	23	26
36	STEAM ELECTRIC POWER	LIBERTY	TRINITY	2,962	4,240	4,957	5,831	6,896	8,195
37	WEST HARDIN WSC	LIBERTY	NECHES	29	35	42	47	54	63
LIBERTY TOTAL				106,213	108,875	110,898	113,089	115,651	118,751
1	COUNTY-OTHER	MADISON	BRAZOS	106	110	113	115	118	122
2	COUNTY-OTHER	MADISON	TRINITY	896	931	959	971	998	1,032
3	IRRIGATION	MADISON	TRINITY	19	19	19	19	19	19
4	LIVESTOCK	MADISON	BRAZOS	120	120	120	120	120	120
5	LIVESTOCK	MADISON	TRINITY	630	630	630	630	630	630
6	MADISONVILLE	MADISON	TRINITY	781	815	837	856	881	908
7	MANUFACTURING	MADISON	TRINITY	260	289	316	343	367	398
8	MINING	MADISON	BRAZOS	9	9	9	9	9	9
9	MINING	MADISON	TRINITY	15	15	15	15	15	15
10	NORMANGEE	MADISON	TRINITY	10	11	12	12	13	13
MADISON TOTAL				2,846	2,949	3,030	3,090	3,170	3,266
1	CONROE	MONTGOMERY	SAN JACINTO	11,262	14,588	18,512	22,987	28,860	35,846
2	CONSUMERS WATER INC	MONTGOMERY	SAN JACINTO	222	243	305	371	470	583
3	COUNTY-OTHER	MONTGOMERY	SAN JACINTO	22,913	27,163	38,401	51,881	71,391	94,064
4	CRYSTAL SPRNGS WATER COMPANY	MONTGOMERY	SAN JACINTO	606	704	933	1,208	1,586	2,026
5	CUT AND SHOOT	MONTGOMERY	SAN JACINTO	210	235	285	348	430	529

WUG	COUNTY	BASIN	2011 DEMANDS (ac-ft/yr)						
			2010	2020	2030	2040	2050	2060	
6	EAST PLANTATION UD	MONTGOMERY	SAN JACINTO	471	551	734	952	1,244	1,584
7	H M W SUD	MONTGOMERY	SAN JACINTO	1,696	1,864	2,282	2,768	3,434	4,208
8	HOUSTON	MONTGOMERY	SAN JACINTO	190	253	375	516	704	926
9	IRRIGATION	MONTGOMERY	SAN JACINTO	66	66	66	66	66	66
10	LIVESTOCK	MONTGOMERY	SAN JACINTO	510	510	510	510	510	510
11	MAGNOLIA	MONTGOMERY	SAN JACINTO	439	604	800	1,015	1,302	1,643
12	MANUFACTURING	MONTGOMERY	SAN JACINTO	2,045	2,332	2,608	2,883	3,126	3,392
13	MINING	MONTGOMERY	SAN JACINTO	480	509	526	543	559	573
14	MONTGOMERY	MONTGOMERY	SAN JACINTO	249	1,019	1,497	1,970	2,442	2,927
15	MONTGOMERY COUNTY MUD #18	MONTGOMERY	SAN JACINTO	1,871	2,377	3,518	4,869	6,653	8,726
16	MONTGOMERY COUNTY MUD #19	MONTGOMERY	SAN JACINTO	459	452	448	444	444	444
17	MONTGOMERY COUNTY MUD #8	MONTGOMERY	SAN JACINTO	842	1,095	1,325	1,397	1,381	1,369
18	MONTGOMERY COUNTY MUD #9	MONTGOMERY	SAN JACINTO	796	1,074	1,369	1,504	1,526	1,541
19	MONTGOMERY COUNTY UD #2	MONTGOMERY	SAN JACINTO	559	552	545	538	538	538
20	MONTGOMERY COUNTY UD #3	MONTGOMERY	SAN JACINTO	485	504	560	629	728	849
21	MONTGOMERY COUNTY UD #4	MONTGOMERY	SAN JACINTO	981	970	958	947	947	947
22	MONTGOMERY COUNTY WCID #1	MONTGOMERY	SAN JACINTO	499	519	577	651	756	885
23	NEW CANEY MUD	MONTGOMERY	SAN JACINTO	1,460	1,647	2,156	2,708	3,507	4,436
24	OAK RIDGE NORTH	MONTGOMERY	SAN JACINTO	683	748	897	1,067	1,297	1,573
25	PANORAMA VILLAGE	MONTGOMERY	SAN JACINTO	654	682	710	743	776	811
26	PATTON VILLAGE	MONTGOMERY	SAN JACINTO	87	88	101	115	136	165
27	POINT AQUARIUS MUD	MONTGOMERY	SAN JACINTO	734	908	1,303	1,762	2,377	3,092
28	PORTER WSC	MONTGOMERY	SAN JACINTO	1,944	2,156	2,697	3,347	3,317	3,317
29	RAYFORD ROAD MUD	MONTGOMERY	SAN JACINTO	2,309	2,288	2,268	2,268	2,268	2,268
30	RIVER PLANTATION MUD	MONTGOMERY	SAN JACINTO	835	824	812	801	798	798
31	ROMAN FOREST	MONTGOMERY	SAN JACINTO	544	839	1,192	1,568	2,073	2,677
32	SHENANDOAH	MONTGOMERY	SAN JACINTO	1,746	2,024	2,358	2,721	3,205	3,792
33	SOUTHERN MONTGOMERY COUNTY MUD	MONTGOMERY	SAN JACINTO	1,901	2,402	2,417	2,493	2,523	2,581
34	SOUTHWEST UTILITIES	MONTGOMERY	SAN JACINTO	254	281	352	432	542	675
35	SPLENDORA	MONTGOMERY	SAN JACINTO	188	224	297	383	502	640
36	SPRING CREEK UD	MONTGOMERY	SAN JACINTO	537	612	800	1,025	1,335	1,696
37	STAGECOACH	MONTGOMERY	SAN JACINTO	79	106	144	194	265	365
38	STANLEY LAKE MUD	MONTGOMERY	SAN JACINTO	744	904	898	892	892	892
39	STEAM ELECTRIC POWER	MONTGOMERY	SAN JACINTO	5,046	8,537	9,981	11,741	13,886	16,502
40	THE WOODLANDS	MONTGOMERY	SAN JACINTO	14,671	26,596	28,330	28,197	28,063	28,063
41	WILLIS	MONTGOMERY	SAN JACINTO	568	649	816	1,024	1,296	1,626
42	WOODBANCH	MONTGOMERY	SAN JACINTO	183	202	225	249	284	330
MONTGOMERY TOTAL				83,018	110,901	135,888	162,727	198,439	240,475
1	COUNTY-OTHER	POLK	TRINITY	1,600	1,691	1,744	1,794	1,880	1,976
2	LAKE LIVINGSTON WATER SUPPLY & SEWER SERVICE CO	POLK	TRINITY	890	944	985	1,004	1,044	1,100
3	LIVESTOCK	POLK	TRINITY	134	134	134	134	134	134
4	LIVINGSTON	POLK	TRINITY	2,137	2,517	2,802	3,006	3,212	3,423
5	MINING	POLK	TRINITY	29	31	32	33	34	35
6	ONALASKA	POLK	TRINITY	189	229	260	281	302	325
7	ONALASKA WSC	POLK	TRINITY	240	244	247	242	246	255
8	TRINITY RURAL WSC	POLK	TRINITY	6	7	8	8	9	9
POLK TOTAL				5,225	5,797	6,212	6,502	6,861	7,257
1	COLDSRING	SAN JACINTO	SAN JACINTO	44	51	56	59	60	61
2	COLDSRING	SAN JACINTO	TRINITY	163	186	205	216	222	225
3	COUNTY-OTHER	SAN JACINTO	SAN JACINTO	868	974	1,052	1,091	1,114	1,129
4	COUNTY-OTHER	SAN JACINTO	TRINITY	1,339	1,513	1,607	1,463	1,372	1,240
5	IRRIGATION	SAN JACINTO	TRINITY	667	667	667	667	667	667
6	LAKE LIVINGSTON WATER SUPPLY & SEWER SERVICE CO	SAN JACINTO	SAN JACINTO	95	114	127	133	137	140
7	LAKE LIVINGSTON WATER SUPPLY & SEWER SERVICE CO	SAN JACINTO	TRINITY	206	245	275	288	295	301
8	LIVESTOCK	SAN JACINTO	SAN JACINTO	142	142	142	142	142	142
9	LIVESTOCK	SAN JACINTO	TRINITY	142	142	142	142	142	142
10	MANUFACTURING	SAN JACINTO	SAN JACINTO	48	52	56	60	63	68
11	MERCY WSC	SAN JACINTO	SAN JACINTO	338	404	455	487	504	513
12	MINING	SAN JACINTO	SAN JACINTO	23	23	22	21	20	20
13	MINING	SAN JACINTO	TRINITY	7	6	6	6	6	6
14	POINT BLANK	SAN JACINTO	TRINITY	85	96	104	108	111	112
15	RIVERSIDE WSC	SAN JACINTO	TRINITY	150	179	213	270	302	337
16	SAN JACINTO WSC	SAN JACINTO	TRINITY	406	474	528	561	577	587
17	SHEPHERD	SAN JACINTO	TRINITY	301	355	394	411	424	431
SAN JACINTO TOTAL				5,024	5,623	6,051	6,125	6,158	6,121
1	COUNTY-OTHER	TRINITY	TRINITY	526	558	561	547	522	502
2	GROVETON	TRINITY	TRINITY	119	126	127	123	118	113
3	IRRIGATION	TRINITY	TRINITY	467	467	467	467	467	467
4	LAKE LIVINGSTON WATER SUPPLY & SEWER SERVICE CO	TRINITY	TRINITY	109	111	110	104	98	95
5	LIVESTOCK	TRINITY	TRINITY	211	211	211	211	211	211
6	MINING	TRINITY	TRINITY	6	6	6	6	6	6
7	TRINITY	TRINITY	TRINITY	170	172	165	152	142	137
8	TRINITY RURAL WSC	TRINITY	TRINITY	279	293	292	280	265	255
TRINITY TOTAL				1,887	1,944	1,939	1,890	1,829	1,786
1	CONSOLIDATED WSC	WALKER	TRINITY	8	9	9	8	8	8
2	COUNTY-OTHER	WALKER	SAN JACINTO	4,509	2,629	2,899	2,601	2,659	2,659
3	COUNTY-OTHER	WALKER	TRINITY	3,278	3,252	3,420	2,888	2,671	2,374
4	HUNTSVILLE	WALKER	SAN JACINTO	6,287	7,529	7,659	7,512	7,469	7,472
5	HUNTSVILLE	WALKER	TRINITY	1,400	1,676	1,706	1,673	1,663	1,664
6	IRRIGATION	WALKER	SAN JACINTO	5	5	5	5	5	5
7	IRRIGATION	WALKER	TRINITY	6	6	6	6	6	6
8	LAKE LIVINGSTON WATER SUPPLY & SEWER SERVICE CO	WALKER	TRINITY	29	30	30	29	28	28
9	LIVESTOCK	WALKER	SAN JACINTO	310	310	310	310	310	310
10	LIVESTOCK	WALKER	TRINITY	322	322	322	322	322	322
11	MANUFACTURING	WALKER	SAN JACINTO	577	669	753	839	914	993
12	MANUFACTURING	WALKER	TRINITY	2,631	3,049	3,435	3,827	4,169	4,524
13	MINING	WALKER	SAN JACINTO	7	7	7	7	7	7
14	MINING	WALKER	TRINITY	6	6	6	6	6	6
15	NEW WAVERLY	WALKER	SAN JACINTO	218	235	243	236	235	235
16	RIVERSIDE WSC	WALKER	TRINITY	330	325	335	379	402	439
17	TRINITY RURAL WSC	WALKER	TRINITY	22	24	24	23	23	23
18	WALKER COUNTY RURAL WSC	WALKER	TRINITY	839	898	919	891	884	884
WALKER TOTAL				20,784	20,981	22,088	21,562	21,781	21,959

WUG	COUNTY	BASIN	2011 DEMANDS (ac-ft/yr)						
			2010	2020	2030	2040	2050	2060	
1	BROOKSHIRE	WALLER	BRAZOS	673	847	1,039	1,254	1,517	1,832
2	COUNTY-OTHER	WALLER	BRAZOS	685	708	755	794	869	954
3	COUNTY-OTHER	WALLER	SAN JACINTO	841	1,013	1,227	1,435	1,729	2,066
4	HEMPSTEAD	WALLER	BRAZOS	1,457	2,052	2,694	3,427	4,294	5,313
5	IRRIGATION	WALLER	BRAZOS	4,825	4,825	4,825	4,825	4,825	4,825
6	IRRIGATION	WALLER	SAN JACINTO	18,153	18,153	18,153	18,153	18,153	18,153
7	KATY	WALLER	SAN JACINTO	271	405	554	722	919	1,151
8	LIVESTOCK	WALLER	BRAZOS	676	676	676	676	676	676
9	LIVESTOCK	WALLER	SAN JACINTO	263	263	263	263	263	263
10	MANUFACTURING	WALLER	BRAZOS	17	19	21	24	25	28
11	MANUFACTURING	WALLER	SAN JACINTO	72	82	91	99	108	116
12	MINING	WALLER	BRAZOS	9	9	9	9	9	9
13	MINING	WALLER	SAN JACINTO	71	71	71	71	71	71
14	PINE ISLAND	WALLER	BRAZOS	117	146	177	210	254	305
15	PRAIRIE VIEW	WALLER	BRAZOS	1,129	1,211	1,307	1,418	1,558	1,726
16	PRAIRIE VIEW	WALLER	SAN JACINTO	124	133	144	156	171	190
17	WALLER	WALLER	SAN JACINTO	416	488	572	668	782	917
WALLER TOTAL				29,799	31,101	32,578	34,204	36,223	38,595
REGION H TOTAL				2,377,255	2,601,351	2,816,513	3,036,242	3,277,110	3,525,104